

Textiles

Fabric & Leather Collection

enea

Fabrics by Enea

www.eneadesign.com
www.exitfabrics.com
www.tuvatextil.com

Paris/Gr.C by Enea Fabric

Paris - Product information

Technical information

Composition Surface/Backing
100% Polyester

Roll Width
140 cm (+/-3%)

Roll Length (average)
30/40m

Weight
520g/lm (+/-5%)

Tensile Strength
Warp 528N/31,6% EN ISO 13934-1
Weft 504N/14,2% EN ISO 13934-1

Tear Growth Resistance
Warp 42N EN ISO 13937-3
Weft 66,5N EN ISO 13937-3

Seam Slippage Resistance
Warp 2mm EN ISO 13936-2
Weft 2mm EN ISO 13936-2

Abrasion Test
>100.000 EN ISO 12947-1,2

Pilling
5 EN ISO 12945-2

Colour Fastness to Rubbing
5 DRY EN ISO 105-X12
5 WET EN ISO 105-X12

Colour Fastness to Artificial Light
5 EN ISO 105-B02

Applications & Features

Breathable

Fire Proof Norms
BS 5852 Part 1 - Cigarette Test - PASS
EN 1021-1 - Cigarette Test - PASS
CA Tech. Bull.117 / NFPA - Cigarette Test - PASS

Environment
REACH Compliant
Confidence Textiles according to
OEKO-TEX Standard 100

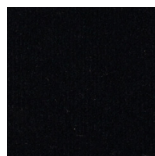
Clean & Care recommendations
Frequent wash may affect the performance of the product.
To remove dust use a vacuum cleaner.
Any stain, spills or soiling should be cleaned up promptly with a neutral soap solution using a cloth in smooth circular movements.
Do not accept responsibility for any damage resulting from inappropriate use, chemical cleaning or additional impregnation.



EPO01



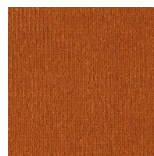
EPO04



EPO05



EPO07



EPO08



EPO09



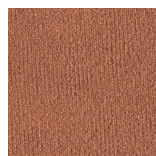
EPO10



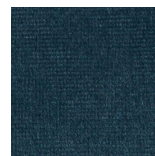
EPO11



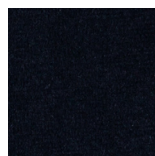
EPO12



EPO13



EPO14



EPO16



EPO17



EPO18



EPO19



EPO21



EPO22



EPO23



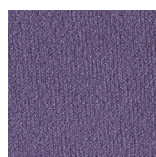
EPO24



EPO25



EPO26



EPO27



EPO28



EPO29



EPO31



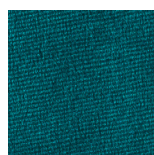
EPO32



EPO33



EPO34



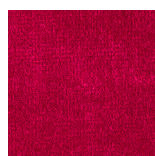
EPO35



EPO36



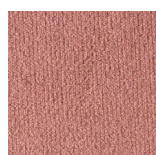
EPO37



EPO39



EPO40



EPO41



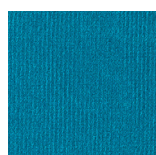
EPO45



EPO46



EPO47



EPO52



EPO53



EPO56

Babel/Gr.C by Enea Fabric

Babel - Product information

Technical information

Composition Surface/Backing

100% Polyester

Roll Width

142 cm (+/-3%)

Roll Length (average)

35/40m

Weight

440g/lm (+/-5%)

Tensile Strength

Warp 1311N/33% EN ISO 13934-1

Weft 755N/27,4% EN ISO 13934-1

Tear Growth Resistance

Warp 162,4N EN ISO 13937-3

Weft 129,8N EN ISO 13937-3

Seam Slippage Resistance

Warp 3,5mm EN ISO 13936-2

Weft 4mm EN ISO 13936-2

Abrasion Test

90.000 EN ISO 12947-1,2

Pilling

3-4 EN ISO 12945-2

Colour Fastness to Rubbing

5 DRY EN ISO 105-X12

4-5 WET EN ISO 105-X12

Colour Fastness to Artificial Light

4 EN ISO 105-B02

Applications & Features

Breathable

Fire Proof Norms

BS 5852 Part 1 - Cigarette Test - PASS

EN 1021-1 - Cigarette Test - PASS

CA Tech. Bull.117:2013 / NFPA 260- Ciga-

rette Test - PASS

Environment

REACH Compliant

Confidence Textiles according to

OEKO-TEX Standard 100

Clean & Care recommendations

Easy to Clean:

Promptly remove any excess liquid or residue with a clean cloth.

Use a wet cloth with 5% neutral soap, press gently and rub in circular movements.

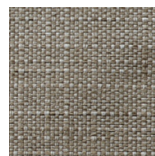
Recommend using a 100% cotton cloth and a brush if necessary.

Frequent wash may affect the performance of the treatment Easy to Clean.

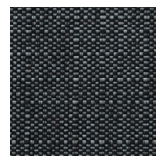
The analytical results are referred only to the sample tested.



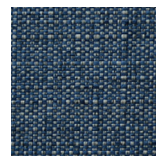
EB002



EB004



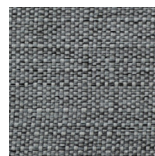
EB005



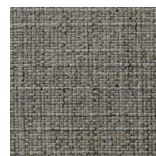
EB006



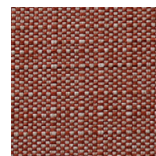
EB011



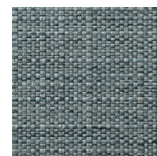
EB026



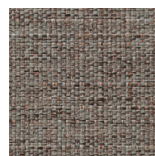
EB032



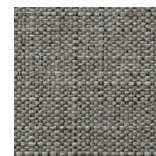
EB038



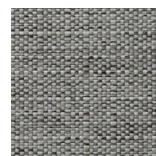
EB040



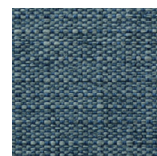
EB041



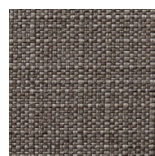
EB042



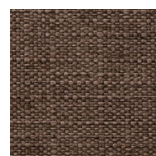
EB043



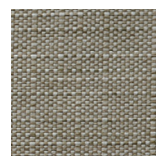
EB044



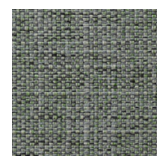
EB046



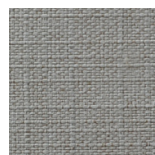
EB048



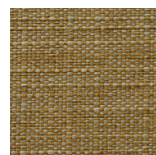
EB049



EB054



EB055



EB057

Seattle/Gr.C by Enea Fabric

Seattle - Product information

Technical information

Composition Surface/Backing

100% Polyester

Roll Width

142 cm (+/-3%)

Roll Length (average)

40/45m

Weight

653g/lm (+/-5%)

Tensile Strength

Warp 2041N/48,7% EN ISO 13934-1

Weft 1057N/49,5% EN ISO 13934-1

Tear Growth Resistance

Warp 356,5N EN ISO 13937-3

Weft 297N EN ISO 13937-3

Seam Slippage Resistance

Warp 1,8mm EN ISO 13936-2

Weft 2mm EN ISO 13936-2

Abrasion Test

90.000 EN ISO 12947-1,2

Pilling

4 EN ISO 12945-2

Colour Fastness to Rubbing

5 DRY EN ISO 105-X12

4 WET EN ISO 105-X12

Colour Fastness to Artificial Light

5 EN ISO 105-B02

Applications & Features

Breathable

Fire Proof Norms

BS 5852 Part 1 - Cigarette Test - PASS

EN 1021-1 - Cigarette Test - PASS

CA Tech. Bull.117:2013 / NFPA 260 - Ci-

garette Test - PASS

Environment

REACH Compliant

Confidence Textiles according to

OEKO-TEX Standard 100

Clean & Care recommendations

Easy to Clean:

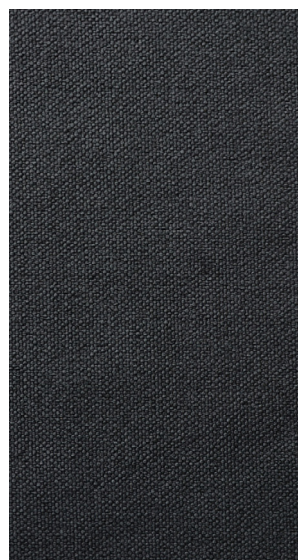
Promptly remove any excess liquid or residue with a clean cloth.

Use a wet cloth with 5% neutral soap, press gently and rub in circular movements.

Recommend using a 100% cotton cloth and a brush if necessary.

Frequent wash may affect the performance of the treatment Easy to Clean.

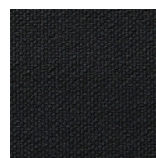
The analytical results are referred only to the sample tested.



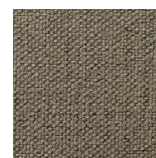
ES001



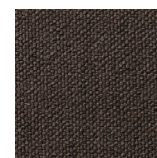
ES002



ES005



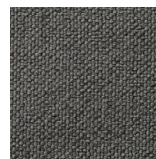
ES009



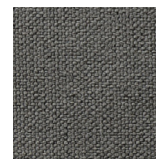
ES011



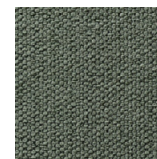
ES012



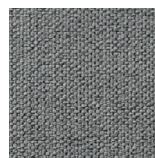
ES019



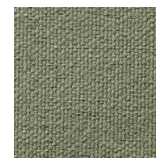
ES020



ES022



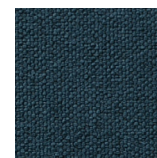
ES026



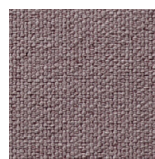
ES028



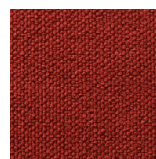
ES030



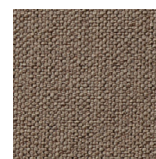
ES034



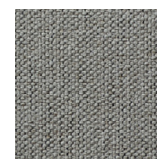
ES036



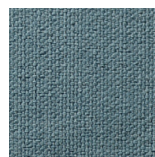
ES038



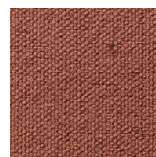
ES041



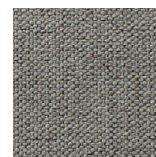
ES042



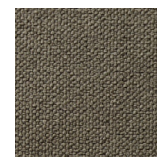
ES044



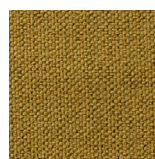
ES047



ES050



ES051



ES057

Plus F.R./Gr.C by Exitfabrics

Plus F.R. - Product information

With excellent fire resistance properties, Plus F.R. passes all the fireproof regulations required in the contract or office sectors (including SBI certification for construction products). A fabric with modern crepe binding made in polyester F.R. With a large colour range (up to 40 colours to choose from), it is a timeless classic from Exit Fabrics.

Technical information

Application

Leisure Contract Office Home

Composition

100% Polyester F.R.

Roll Width

140 cm (+/-2%)

Roll Length

45m (+/-10%)

Weight

455g/lm (+/-5%) / 325g/m2 (+/-5%)

Abrasion resistance

100.000 Martindale EN ISO 12947-2

Pilling

4-5EN ISO 12945-2 (1-5)

Colour Fastness to Light

5-6 EN ISO 105-B02 method 2 (1-8)

Colour Fastness to Rubbing

4 DRY EN ISO 105-X12

4 WET EN ISO 105-X12

Tear Resistance

Warp 81N EN ISO 13937-3

Weft 66N EN ISO 13937-3

Acoustic absorption

EN ISO 10534-2: 0.9

Flammability

BS 5852 O/1

BS 5852 CRIB 5

BS 7176 Medium Hazard

CAL TB 117 Section 1

EN 1021 1/2

EN 13501-1 B-s1, d0

FAR 25.853 a) Appendix F Part I (a) (1) (ii)

IMO MSC.307 (88) Annex I Part 8

NF D 60-013 AM 18

NF P92-507 M1

NFPA 260 Class 1

Regulation n° 118 de UNECE Annex 6

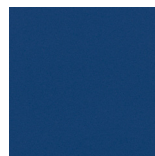
UNE 23 727-90 1R Class M.1

UNI 9175 Class 1. IM

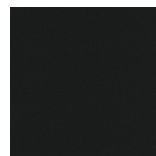
Maintenance

Vacuum regularly. In case of stains, use a damp cloth with neutral soap suitable for cleaning of upholstery products.

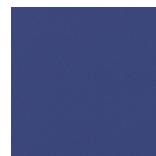
PLA004



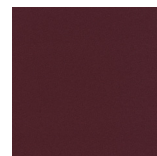
PLA005



PLA009



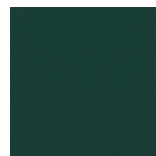
PLA021



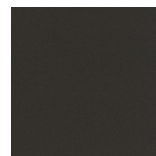
PLA030



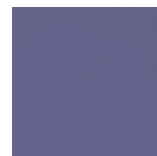
PLA035



PLA045



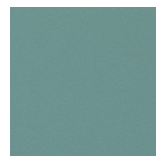
PLA046



PLA069



PLA072



PLA074



PLA076



PLA077



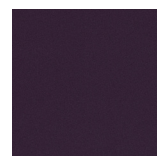
PLA079



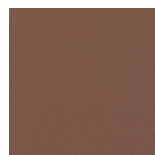
PLA081



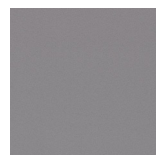
PLA082



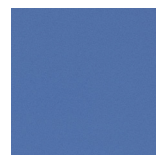
PLA084



PLA091



PLA094



PLA097



PLA100



PLA101



PLA102



PLA105



PLA106



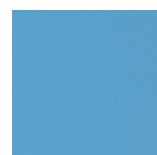
PLA108



PLA141



PLA156



PLA157



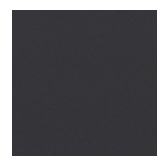
PLA160



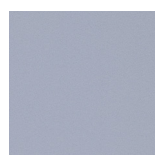
PLA161



PLA168



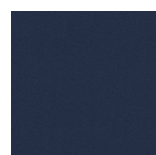
PLA172



PLA173



PLA174



PLF024



PLF136



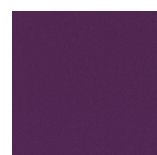
PLF151



PLF158



PLF201



PLF292

Londres F.R./Gr.C by Exitfabrics

Londres F.R. - Product information

Open-weave fabric with flat binding.
Fire-resistant as standard (polyester F.R.), its woollen touch makes it appropriate for surfaces of all kinds, whether horizontal or vertical.

Technical information

Application

Contract Office Home Leisure

Composition

100% Polyester F.R.

Roll Width

140 cm (+/-2%)

Roll Length

45m (+/-10%)

Weight

402g/lm (+/-5%) / 287g/m2 (+/-5%)

Abrasion resistance

100.000 Martindale EN ISO 12947-2

Pilling

4 EN ISO 12945-2 (1-5)

Colour Fastness to Light

4-5 EN ISO 105-B02 method 2 (1-8)

Colour Fastness to Rubbing

4-5 DRY EN ISO 105-X12

4-5 WET EN ISO 105-X12

Tear Resistance

Warp 39N EN ISO 13937-3

Weft 37N EN ISO 13937-3

Acoustic absorption

EN ISO 10534-2: 0.9

Flammability

BS 5852 0/1

BS 5852 CRIB 5

BS 7176 Medium Hazard

CAL TB 117 Section 1

EN 1021 1/2

FAR 25.853 a) Appendix F Part I (a) (1) (ii)

IMO MSC.307 (88) Annex I Parte 8

NF D 60-013 AM 18

NF P92-507 M1

NFPA 260 Class 1

Regulation n° 118 de UNECE Annex 6

UNE 23 727-90 1R Class M.1

UNI 9175 1. IM

Maintenance

Vacuum regularly. In case of stains, use a damp cloth with neutral soap suitable for cleaning of upholstery products.



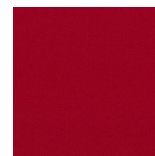
LN210



LN252



LN297



LN300



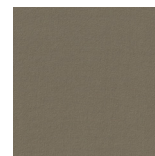
LN310



LN327



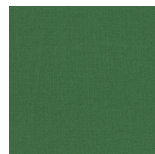
LN376



LN412



LN520



LN559



LN575



LN616



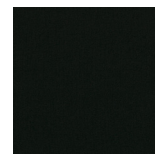
LN668



LN704



LN705



LN800

Stretch Plain F.R. /Gr.E by Exitfabrics

Stretch Plain F.R. - Product information

Stretch plain is a fire-resistant fabric with flat binding, and high performance with 140,000 Martindale cycles. It has multi-directional stretch properties allowing for excellent and comfortable upholstery. As well as offering an extensive and balanced palette of colours, it gives the option of customisation with a range of bespoke colours. And if that weren't enough, there is the possibility of combining its plain colour with the Vigoré finish of Stretch F.R. This collection has passed the SBI standard for construction products.

Technical information

Application

Leisure Contract Office Home

Composition

100% Polyester F.R.

Roll Width 140 cm (+/-2%)

Roll Length 40m (+/-10%)

Weight

530g/lm (+/-5%) / 380g/m2 (+/-5%)

Abrasion resistance

140.000 Martindale EN ISO 12947-2

Pilling

4-5 EN ISO 12945-2 (1-5)

Colour Fastness to Light

6 EN ISO 105-B02 method 2 (1-8)

Colour Fastness to Rubbing

4-5 DRY EN ISO 105-X12

4-5 WET EN ISO 105-X12

Tear Resistance

Warp 130N EN ISO 13937-3

Weft 120N EN ISO 13937-3

Acoustic absorption

EN ISO 10534-2: 0.9

Flammability

BS 5852 0/1

BS 5852 CRIB 5

BS 7176 Medium Hazard

CAL TB 117 Section 1

EN 1021 1/2

EN 13501-1 B-s1 d0

EN 13773 Class 1

FAR 25.853 a) Appendix F Part I (a) (1) (ii)

IMO MSC.307 (88) Annex I Parte 8

NF D 60-013 AM 18

NF P92-507 M1

NFPA 260 Class 1

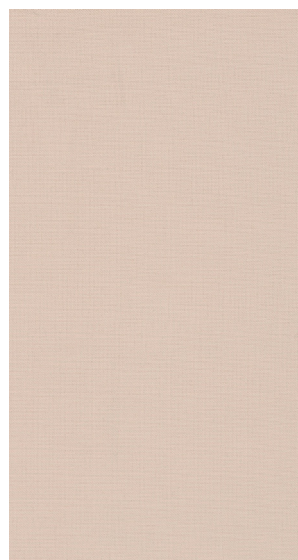
Regulation n° 118 de UNECE Annex 6

UNE 23 727-90 1R Class M.1

UNI 9175 1. IM

Maintenance

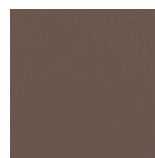
Vacuum regularly. In case of stains, use a damp cloth with neutral soap suitable for cleaning of upholstery products.



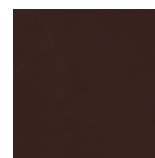
SP01



SP02



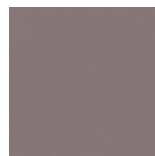
SP03



SP04



SP05



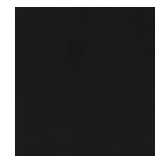
SP06



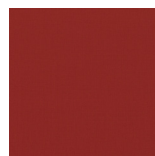
SP07



SP08



SP09



SP10



SP11



SP12



SP13



SP14



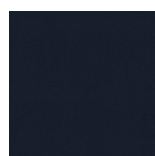
SP15



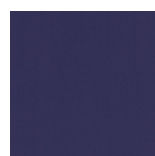
SP16



SP17



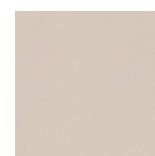
SP18



SP19



SP20



SP21



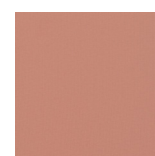
SP22



SP23



SP24



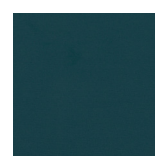
SP25



SP26



SP27



SP28



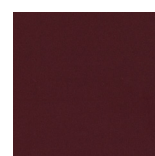
SP29



SP30



SP31



SP32



SP33

Camira by Enea

Era/Gr.C by Camira

Era - Product information



Era is a subtle, two tone polyester fabric containing stretch in both directions for ease of upholstery. The baby herringbone weave offers an understated contemporary texture while its colouring technique provides close up intrigue. The palette incorporates playful brights and sophisticated muted tones.

Technical information

Industry Application
Workplace, Education

Composition
100% Polyester

Environment
Certified to OEKO-TEX® Standard 100
Certified to Indoor Advantage™ Gold
Non metallic dyestuffs

Width
140 cm minimum

Weight
320 g/m² ±5% (448 g/lin.m ±5%)

Abrasion Resistance*
Heavy duty / 10 year guarantee.
Independently certified to ≥100,000
Martindale cycles

Flammability
EN 1021 - 1 (cigarette)
EN 1021 - 2 (match)
BS 7176 Low Hazard
EN 13501-1 Adhered Class B, s1, d0
EN 13501-1 Un-adhered Class C, s1, d0

Light Fastness
5 (ISO 105 - B02)

Fastness to Rubbing
Wet: 4, Dry: 4 (ISO 105 - X12)

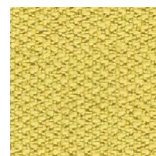
Cleaning
Washable to 60°C. Vacuum regularly.
Wipe clean with a damp cloth or
shampoo using proprietary upholstery
shampoo.



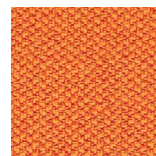
CSE01



CSE02



CSE03



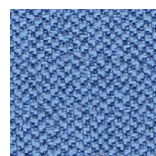
CSE05



CSE06



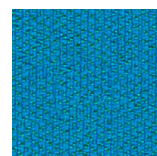
CSE07



CSE08



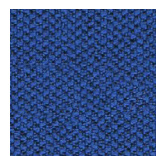
CSE09



CSE10



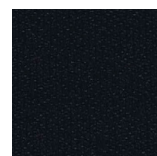
CSE11



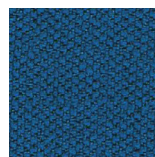
CSE12



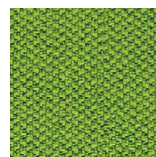
CSE13



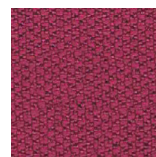
CSE14



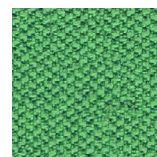
CSE15



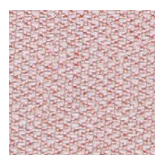
CSE16



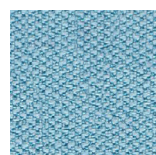
CSE17



CSE18



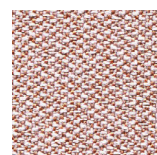
CSE19



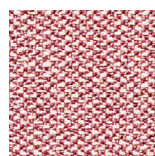
CSE20



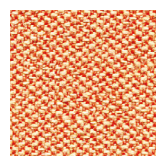
CSE21



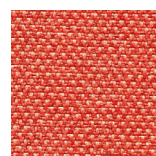
CSE23



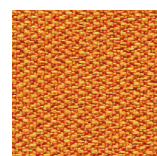
CSE24



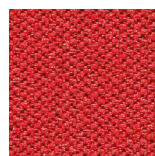
CSE25



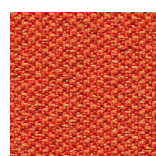
CSE26



CSE27



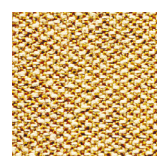
CSE28



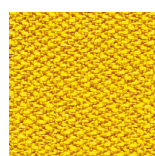
CSE29



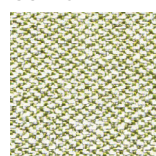
CSE30



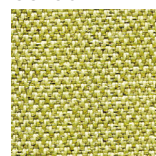
CSE31



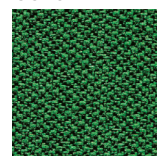
CSE32



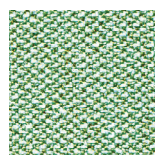
CSE33



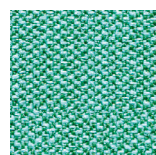
CSE34



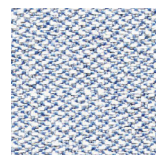
CSE35



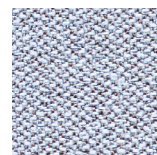
CSE36



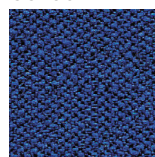
CSE37



CSE38



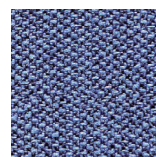
CSE39



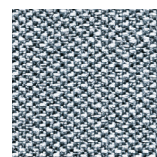
CSE40



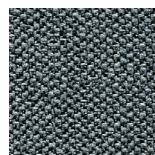
CSE41



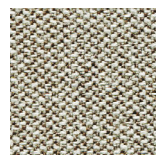
CSE42



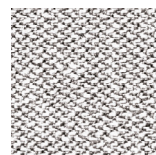
CSE43



CSE44



CSE45



CSE46

Urban/Gr.D by Camira

Urban - Product information



Urban takes its inspiration from the street. It has a sharply styled architectural look with clean lines forming a structured geometric grid pattern reminiscent of a downtown urban cityscape. Lightly textured, there's an almost industrial metallic sheen to the freshly themed colourways which work with both Xtreme and Lucia.

Technical information

Industry Application

Workplace, Education, Hospitality & Leisure
When TriOnyx™ treated: Healthcare

Composition

100% Recycled Flame Retardant Polyester

Environment

Certified to the EU Ecolabel
Certified to OEKO-TEX® Standard 100
Made from 100% recycled polyester
Non metallic dyestuffs

Width

140 cm minimum

Weight

340 g/m² ±5% (476 g/lin.m ±5%)

Abrasion Resistance*

Heavy duty / 10 year guarantee
Independently certified to ≥100,000
Martindale cycles

Flammability

EN 1021 - 1 (cigarette)
EN 1021 - 2 (match)
BS 7176 Low Hazard
BS 5852 Ignition Source 5
BS 7176 Medium Hazard
DIN 4102 B1
NF D 60-013
ÖNORM A 3800-1
(over CMHR 58kg/m³ foam)
UNI 9175 Classe 1 IM
EN 13501-1 Adhered Class B, s1, d0
EN 13501-1 Un-adhered Class B, s1, d0

Light Fastness

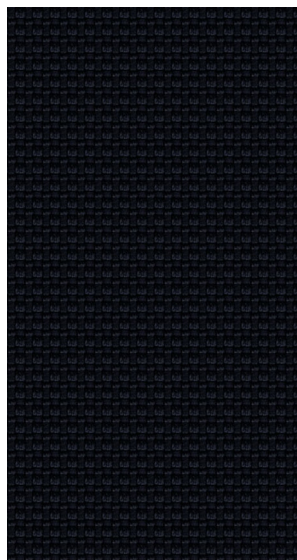
6 (ISO 105 - B02)

Fastness to Rubbing

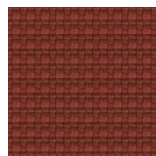
Wet: 4, Dry: 4 (ISO 105 - X12)

Cleaning

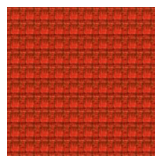
Washable to 60°C. Vacuum regularly.
Wipe clean with a damp cloth or
shampoo using proprietary upholstery
shampoo.



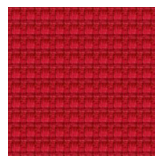
YN009



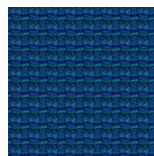
YN027



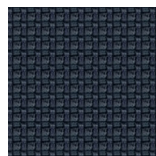
YN076



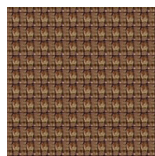
YN079



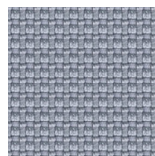
YN082



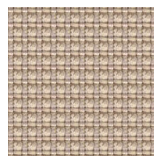
YN083



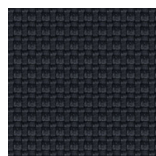
YN091



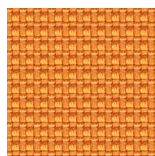
YN094



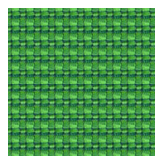
YN108



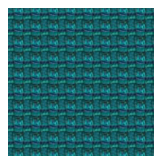
YN145



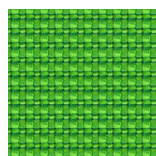
YN148



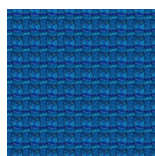
YN159



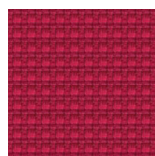
YN160



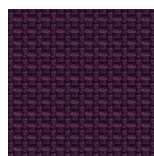
YN200



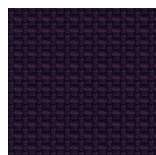
YN202



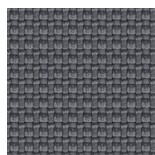
YN203



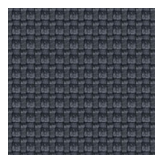
YN204



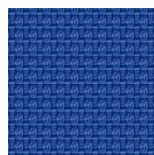
YN205



YN206



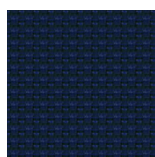
YN207



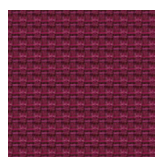
YN208



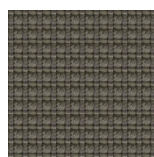
YN209



YN210



YN211



YN212

Advantage/Gr.D by Camira

Advantage - Product information



Low Hazard commercial seating fabric, Advantage, offers a combination of enduring aesthetic appeal and high performance durability which means it will look good and last for years. Advantage is a plain weave fabric in a rich assortment of colourways in both plains and mixes.

Technical information

Industry Application

Workplace, Education

Composition

60% Polypropylene, 30% Wool,
10% Viscose

Width

130 cm minimum

Weight

385 g/m² ±5% (501 g/lin.m ±5%)

Abrasion Resistance*

Heavy duty/10 year guarantee
Independently certified to ≥60,000
Martindale cycles

Flammability

EN 1021 - 1 (cigarette)
EN 1021 - 2 (match)
BS 7176 Low Hazard

Light Fastness

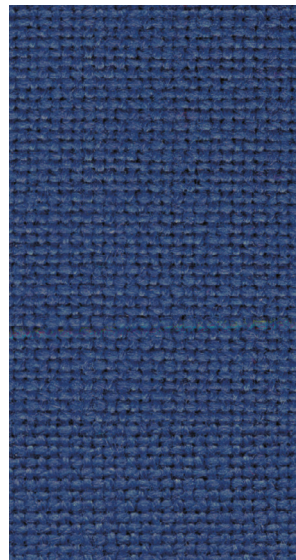
5 (ISO 105 - B02)

Fastness to Rubbing

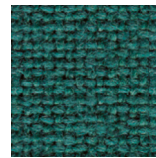
Wet: 4, Dry: 4 (ISO 105 - X12)

Cleaning

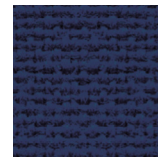
Vacuum regularly.
Wipe clean with a damp cloth or
shampoo using proprietary upholstery
shampoo.



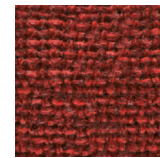
AD001



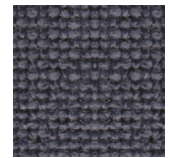
AD002



AD004



AD005



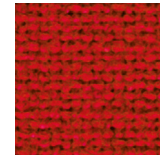
AD009



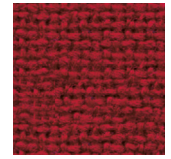
AD010



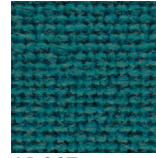
AD011



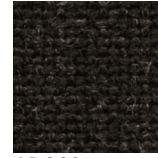
AD014



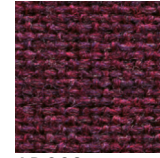
AD020



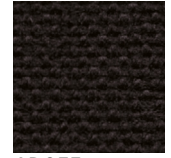
AD027



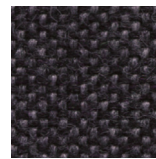
AD028



AD029



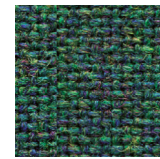
AD055



AD066



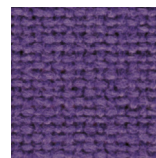
AD072



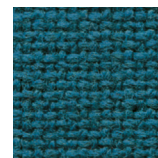
AD101



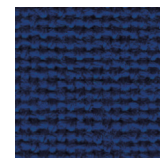
AD113



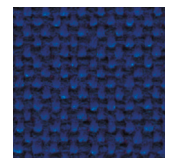
AD118



AD124



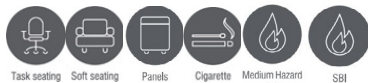
AD126



AD213

X2/Gr.D by Camira

X2 - Product information



X2 provides stretch, flammability and abrasion performance in an unobtrusive background grey mélange effect. The subtle dark tones create texture and dimension within a playful colour palette of brights through to subtle neutrals. The mottled appearance is also a practical solution to aid appearance retention.

X2 is a 100% recycled fabric including closed loop content derived from textile remnants, which are first re-made into polyester yarn and then upcycled into new fabric.

Technical information

Industry Application

Workplace, Education, Hospitality & Leisure

Composition

100% Recycled FR Polyester

Environment

Certified to the EU Ecolabel
 Certified to OEKO-TEX® Standard 100 Certified to Indoor Advantage™ Gold Made from 100% recycled polyester
 Non metallic dyestuffs

Width

140 cm minimum

Weight

310 g/m² ±5% (434 g/lin.m ±5%)

Abrasion Resistance*

Heavy duty / 10 year guarantee
 Independently certified to ≥100,000 Martindale cycles

Flammability

EN 1021 - 1&2 (cigarette & match)
 BS 7176 Low Hazard
 BS 5852 Ignition Source 5
 BS 7176 Medium Hazard
 DIN 4102 B1
 NF D 60-013
 ÖNORM B 3825 & A 3800-1
 (58 kg/m³ CMHR Foam)
 UNI 9175 Classe 1 IM
 EN 13501-1 Adhered Class B, s2, d0
 EN 13501-1 Un-adhered Class B, s1, d0

Light Fastness

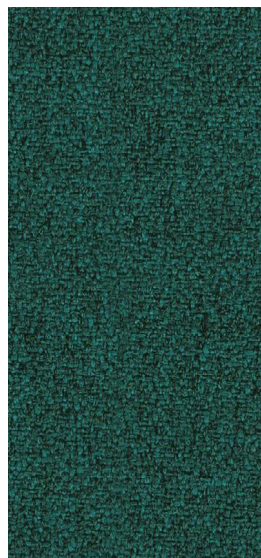
6 (ISO 105 - B02)

Fastness to Rubbing

Wet: 4, Dry: 4 (ISO 105 - X12)

Cleaning

Washable to 60°C. Vacuum regularly.
 Wipe clean with a damp cloth or shampoo using proprietary upholstery shampoo.



AK001



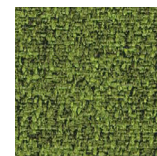
AK002



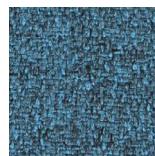
AK003



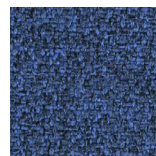
AK004



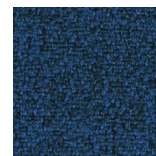
AK005



AK006



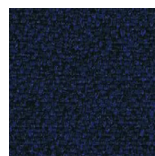
AK007



AK008



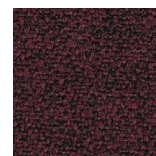
AK009



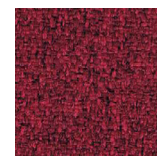
AK010



AK011



AK012



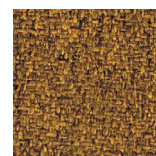
AK013



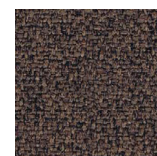
AK014



AK015



AK016



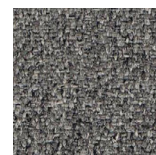
AK017



AK018



AK019



AK020

Main Line F./Gr.E by Camira

Main Line Flax - Plant I Product information



A beloved Camira textile, Main Line Flax is made from the best nature has to offer. A blend of pure wool and harvested flax creates this multi-tonal, inherently flame-retardant fabric.

Technical information

Industry Application

Workplace, Education, Hospitality & Leisure

Composition

75% Virgin Wool, 25% Flax

Environment

Certified to the EU Ecolabel
Certified to Indoor Advantage™ Gold
Rapidly renewable and compostable
Made from wool and bast fibre

Width

140 cm minimum

Weight

437 g/m² ±5% (612 g/lin.m ±5%)

Abrasion Resistance*

Heavy duty / 10 year guarantee
Independently certified to ≥ 50,000
Martindale cycles

Flammability

EN 1021 - 1 (cigarette)
EN 1021 - 2 (match)
BS 7176 Low Hazard
BS 5852 Ignition Source 5
BS 7176 Medium Hazard
NF D 60-013
ÖNORM B 3825 & A 3800-1
(58kg/m³ CMHR Foam)
UNI 9175 Classe 1 IM
BS 476 Part 7 Class 1 (Adhered)
EN 13501-1 Adhered Class B, s1, d0
BS 5867-2: Type B Curtains & Drapes
IMO FTP Code (Part 8)
The Furniture and Furnishing (Fire Safety)
Regulations 1988 (UK domestic cigarette
and match)

Light Fastness

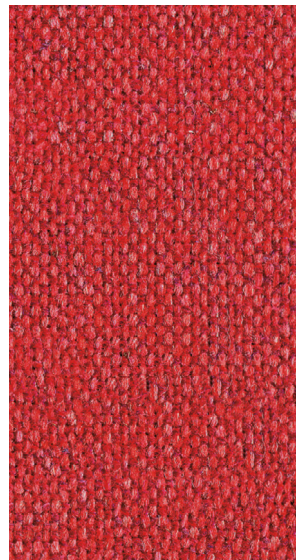
5 (ISO 105 - B02)

Fastness to Rubbing

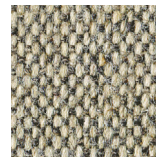
Wet: 3, Dry: 4 (ISO 105 - X12)

Cleaning

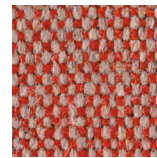
Vacuum regularly.
Professionally dry clean or wipe clean
with a damp cloth using a proprietary
upholstery shampoo.



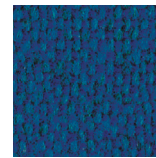
MLF01



MLF02



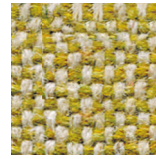
MLF03



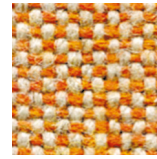
MLF05



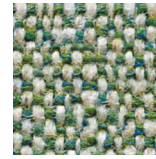
MLF06



MLF07



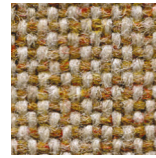
MLF08



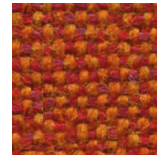
MLF09



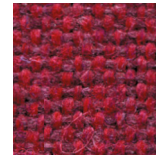
MLF10



MLF12



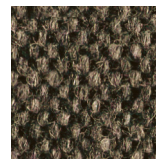
MLF13



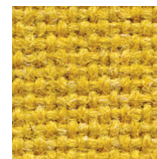
MLF14



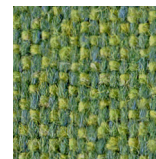
MLF15



MLF16



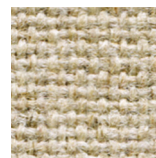
MLF17



MLF18



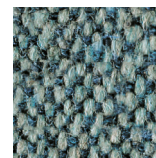
MLF19



MLF20



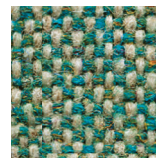
MLF21



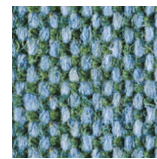
MLF22



MLF23



MLF24



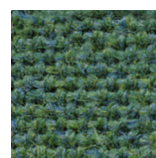
MLF25



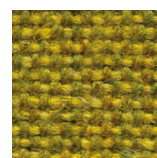
MLF26



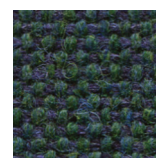
MLF28



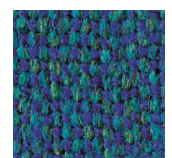
MLF29



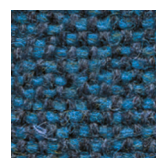
MLF31



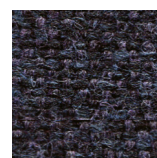
MLF32



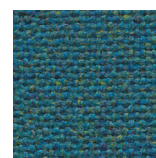
MLF34



MLF35



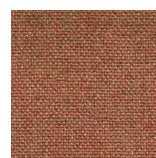
MLF36



MLF37



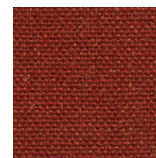
MLF40



MLF43



MLF44



MLF45



MLF46



MLF47



MLF48



MLF49



MLF50

Main Line F./Gr.E by Camira

Main Line Flax - Part II Product information



Task seating Soft seating Panels Curtains Cigarette & Match Medium Hazard



IMO FTP Code (Part 8) Environmental Acoustic 10 Year guarantee

A beloved Camira textile, Main Line Flax is made from the best nature has to offer. A blend of pure wool and harvested flax creates this multi-tonal, inherently flame-retardant fabric.

Technical information

Industry Application

Workplace, Education, Hospitality & Leisure

Composition

75% Virgin Wool, 25% Flax

Environment

Certified to the EU Ecolabel
Certified to Indoor Advantage™ Gold
Rapidly renewable and compostable
Made from wool and bast fibre

Width

140 cm minimum

Weight

437 g/m² ±5% (612 g/lin.m ±5%)

Abrasion Resistance*

Heavy duty / 10 year guarantee
Independently certified to ≥ 50,000
Martindale cycles

Flammability

EN 1021 - 1 (cigarette)
EN 1021 - 2 (match)
BS 7176 Low Hazard
BS 5852 Ignition Source 5
BS 7176 Medium Hazard
NF D 60-013
ÖNORM B 3825 & A 3800-1
(58kg/m³ CMHR Foam)
UNI 9175 Classe 1 IM
BS 476 Part 7 Class 1 (Adhered)
EN 13501-1 Adhered Class B, s1, d0
BS 5867-2: Type B Curtains & Drapes
IMO FTP Code (Part 8)
The Furniture and Furnishing (Fire Safety)
Regulations 1988 (UK domestic cigarette
and match)

Light Fastness

5 (ISO 105 - B02)

Fastness to Rubbing

Wet: 3, Dry: 4 (ISO 105 - X12)

Cleaning

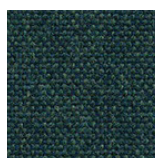
Vacuum regularly.
Professionally dry clean or wipe clean
with a damp cloth using a proprietary
upholstery shampoo.



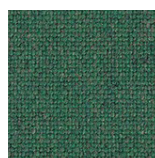
MLF51



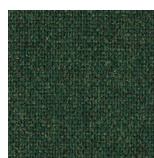
MLF52



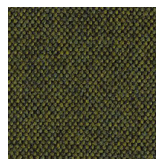
MLF53



MLF54



MLF55



MLF56



MLF57



MLF59



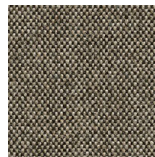
MLF60



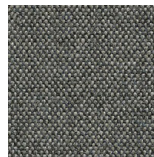
MLF61



MLF62



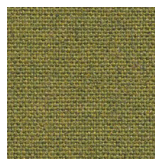
MLF63



MLF65



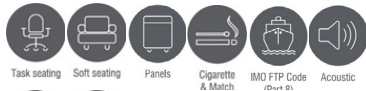
MLF66



MLF67

Blazer/Gr.F by Camira

Blazer - Part I



Product information

Made from premium New Zealand lambswool, Blazer is a timeless wool felt fabric which embodies everything we do: we spin the yarn, weave the cloth, mill the fabric and dye it into our most extensive palette of 77 colourways. Sustainable by design, Blazer is natural and renewable, backed by an independently verified Environmental Product Declaration and certified to the EU Ecolabel.

Technical information

Industry Application

Workplace, Education
When FR treated: Hospitality & Lesiure

Composition

100% Virgin Wool

Environment

Certified to the EU Ecolabel
Certified to Indoor Advantage™ Gold
Rapidly renewable and compostable
Environmental Product Declaration - Natural fabric composition
Non metallic dyestuffs

Width

140 cm minimum

Weight

460 g/m² ±5% (644 g/lin.m ±5%)

Abrasion Resistance*

Heavy duty / 10 year guarantee
Independently certified to ≥ 50,000 Martindale cycles

Flammability

EN 1021 - 1&2 (cigarette & match)
BS 7176 Low Hazard NF D 60-013
ÖNORM B 3825 & A 3800-1
(58kg/m³ CMHR Foam)
UNI 9175 Classe 1 IM
BS 476 Part 7 Class 1 (Adhered)
EN 13501-1 Adhered Class D, s1, d0
IMO FTP Code (Part 8)

Optional: Please specify when ordering (when FR treated):

BS 5852 Ignition Source 5 BS 7176 Medium Hazard
BS 476 Part 6 Class 0
EN 13501-1 Adhered Class B, s1, d0
EN 13501-1 Un-adhered Class D, s2, d0
BS 5867-2: Type B Curtains & Drapes
EN 13773 Class 1

Light Fastness

5 (ISO 105 - B02)

Fastness to Rubbing

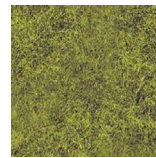
Wet: 4, Dry: 4 (ISO 105 - X12)

Cleaning

Vacuum regularly. Professionally dry clean or wipe clean with a damp cloth.



CUZ1E



CUZ1F



CUZ1J



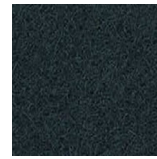
CUZ1K



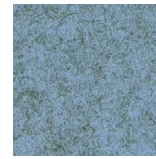
CUZ1L



CUZ1N



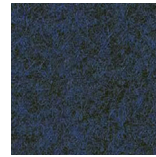
CUZ1P



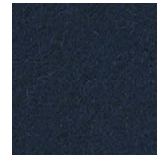
CUZ1R



CUZ1V



CUZ1W



CUZ1Y



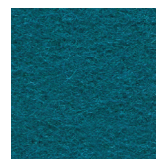
CUZ02



CUZ2Q



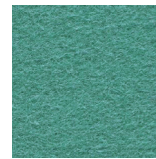
CUZ2T



CUZ2U



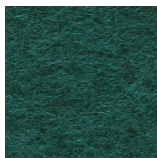
CUZ2W



CUZ2Z



CUZ3A



CUZ3B



CUZ3L



CUZ3M



CUZ3N



CUZ3P



CUZ3Q



CUZ3R



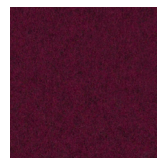
CUZ3S



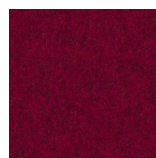
CUZ3T



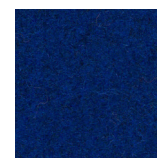
CUZ3U



CUZ3V



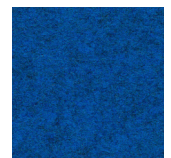
CUZ3W



CUZ3X



CUZ3Y



CUZ3Z



CUZ4A



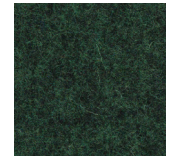
CUZ4B



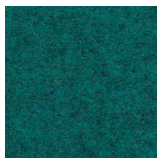
CUZ4C



CUZ4D



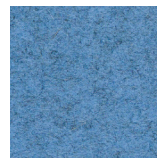
CUZ4E



CUZ4F



CUZ4G



CUZ4H



CUZ4J



CUZ4K



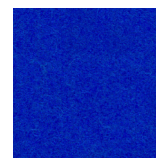
CUZ4L



CUZ4M



CUZ4N



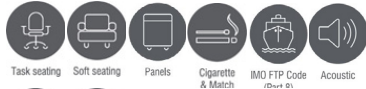
CUZ4P



CUZ4Q

Blazer/Gr.F by Camira

Blazer - Part II



Product information

Made from premium New Zealand lambswool, Blazer is a timeless wool felt fabric which embodies everything we do: we spin the yarn, weave the cloth, mill the fabric and dye it into our most extensive palette of 77 colourways. Sustainable by design, Blazer is natural and renewable, backed by an independently verified Environmental Product Declaration and certified to the EU Ecolabel.

Technical information

Industry Application

Workplace, Education
When FR treated: Hospitality & Lesiure

Composition

100% Virgin Wool

Environment

Certified to the EU Ecolabel
Certified to Indoor Advantage™ Gold
Rapidly renewable and compostable
Environmental Product Declaration -
Natural fabric composition
Non metallic dyestuffs

Width

140 cm minimum

Weight

460 g/m² ±5% (644 g/lin.m ±5%)

Abrasion Resistance*

Heavy duty / 10 year guarantee
Independently certified to ≥ 50,000
Martindale cycles

Flammability

EN 1021 - 1&2 (cigarette & match)
BS 7176 Low Hazard NF D 60-013
ÖNORM B 3825 & A 3800-1
(58kg/m³ CMHR Foam)
UNI 9175 Classe 1 IM
BS 476 Part 7 Class 1 (Adhered)
EN 13501-1 Adhered Class D, s1, d0
IMO FTP Code (Part 8)

Optional: Please specify when ordering (when FR treated):

BS 5852 Ignition Source 5 BS 7176 Me-
dium Hazard
BS 476 Part 6 Class 0
EN 13501-1 Adhered Class B, s1, d0
EN 13501-1 Un-adhered Class D, s2, d0
BS 5867-2: Type B Curtains & Drapes
EN 13773 Class 1

Light Fastness

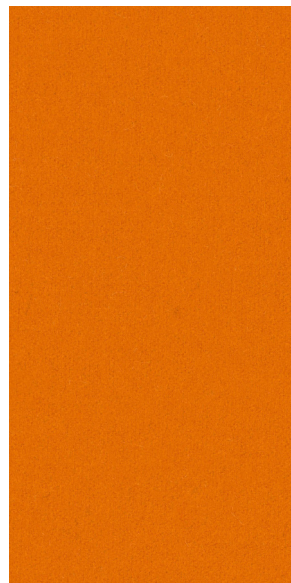
5 (ISO 105 - B02)

Fastness to Rubbing

Wet: 4, Dry: 4 (ISO 105 - X12)

Cleaning

Vacuum regularly. Professionally dry
clean or wipe clean with a damp cloth.



CUZ4R



CUZ4S



CUZ4T



CUZ4U



CUZ4V



CUZ4W



CUZ4X



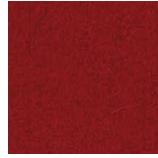
CUZ08



CUZ09



CUZ12



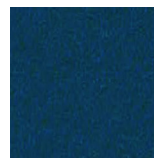
CUZ13



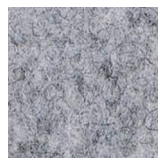
CUZ18



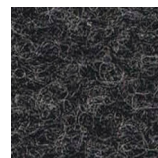
CUZ21



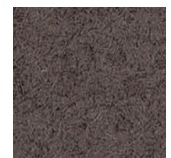
CUZ26



CUZ28



CUZ30



CUZ31



CUZ33



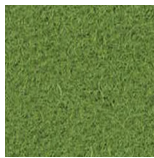
CUZ35



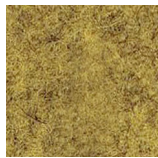
CUZ39



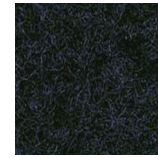
CUZ47



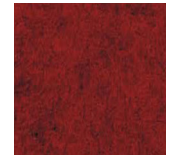
CUZ53



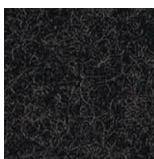
CUZ58



CUZ62



CUZ63



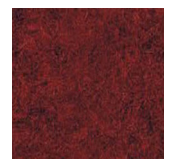
CUZ67



CUZ82



CUZ86



CUZ90

Silk/Gr.G by Camira

Silk - Product information



Task seating Soft seating Curtains Cigarette & Match Medium Hazard IMO FTP Code (Part 8)



Environmental Year guarantee

Silk is a beautifully constructed dobby weave fabric created with a three tone tweed effect, rich with rustic charm. Made from a blend of three natural fibres: silk, flax and wool. This product has a fantastic eco-story, a luxuriously soft handle and is inherently flame retardant. The silk element is recycled content derived from 'noils' which are the short fibre waste remnants from the combing process before spinning. The fabric offers a colour palette of muted pastels with brighter highlights.

Technical information

Industry Application

Workplace, Education, Hospitality & Leisure

Composition

70% Wool, 19% Flax, 11% Silk

Environment

Certified to Indoor Advantage™ Gold
Rapidly renewable and compostable
Made from wool, bast fibre and recycled silk
Non metallic dyestuffs

Width

140 cm minimum

Weight

495 g/m² ±5% (693 g/lin.m ±5%)

Abrasion Resistance*

Heavy duty / 10 year guarantee
Independently certified to ≥ 50,000
Martindale cycles

Flammability

EN 1021 - 1 (cigarette)
EN 1021 - 2 (match)
BS 7176 Low Hazard
BS 5852 Ignition Source 5
BS 7176 Medium Hazard
UNI 9175 Classe 1 IM
BS 5867-2: Type B Curtains & Drapes
IMO FTP Code (Part 8)

Light Fastness

5 (ISO 105 - B02)

Fastness to Rubbing

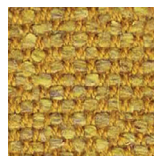
Wet: 4, Dry: 4 (ISO 105 - X12)

Cleaning

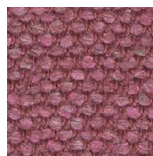
Vacuum regularly.
Professionally dry clean or wipe clean
with a damp cloth.



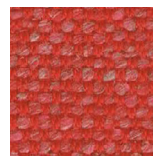
SLK01



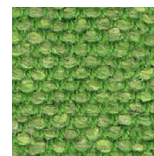
SLK02



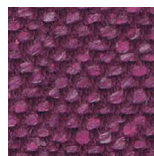
SLK03



SLK05



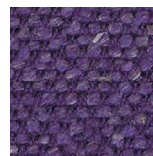
SLK06



SLK07



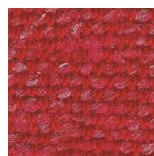
SLK08



SLK09



SLK10



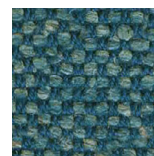
SLK12



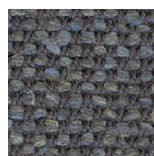
SLK13



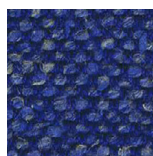
SLK14



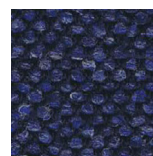
SLK15



SLK16



SLK17



SLK19



SLK20

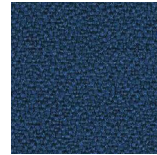
Xtreme/Gr.C by Camira



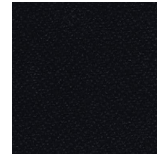
Xtreme is a modern crepe weave fabric made from 100% post-consumer recycled polyester, diverting waste from landfill and saving virgin raw materials. Its stretch properties, coupled with high flame retardancy, durability and non-pilling properties make Xtreme an ever popular fabric for task seating.



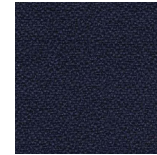
YS004



YS005



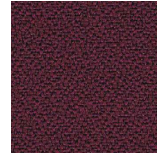
YS009



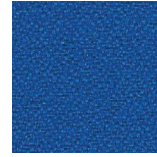
YS024



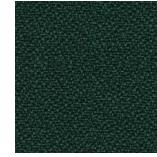
YS026



YS030



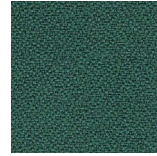
YS035



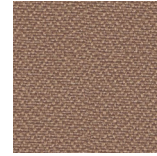
YS045



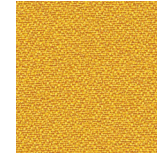
YS046



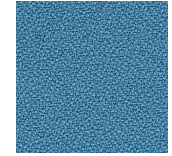
YS047



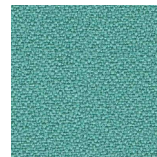
YS071



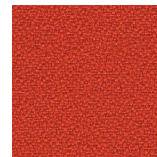
YS072



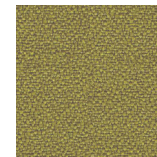
YS073



YS074



YS076



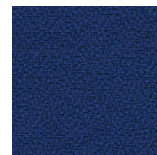
YS077



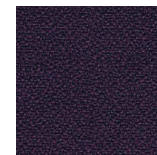
YS079



YS081



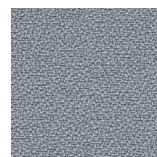
YS082



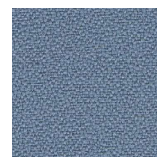
YS084



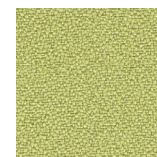
YS091



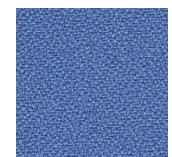
YS094



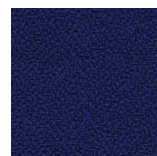
YS095



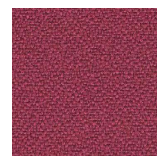
YS096



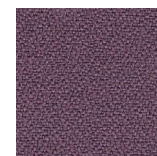
YS097



YS100



YS101



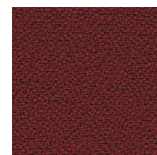
YS102



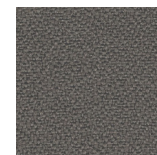
YS105



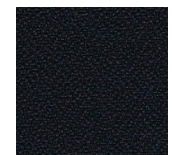
YS108



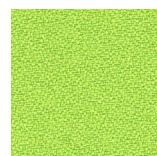
YS136



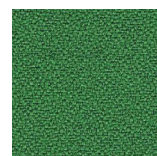
YS141



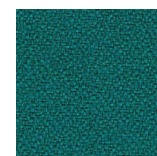
YS145



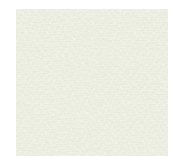
YS156



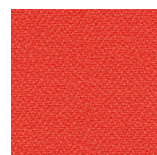
YS159



YS160



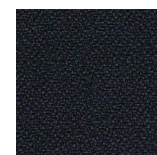
YS165



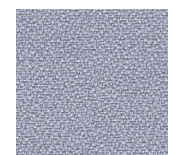
YS168



YS171



YS172



YS173

Technical information

Industry Application

Workplace, Education, Hospitality & Leisure

Composition

100% post-consumer recycled polyester

Environment

Certified to the EU Ecolabel
 Certified to STANDARD 100 By OEKO-TEX®
 Certified to Indoor Advantage™ Gold
 Made from 100% recycled polyester
 Non metallic dyestuffs

Width

140 cm minimum

Weight

310 g/m2 ±5% (434 g/lin.m ±5%)

Abrasion Resistance*

Heavy duty / 10 year guarantee
 Independently certified to ≥ 100,000
 Martindale cycles

Flammability

EN 1021 - 1 (cigarette)
 EN 1021 - 2 (match)
 BS 7176 Low Hazard
 BS 5852 Ignition Source 5
 BS 7176 Medium Hazard
 DIN 4102 B1
 NF D 60-013
 ÖNORM B 3825 & A 3800-1
 (over 58 kg/m3 CMHR foam)
 UNI 9175 Classe 1 IM
 BS 476 Part 7 Class 1 (Adhered)

Light Fastness

6 (ISO 105 - B02)

Fastness to Rubbing

Wet: 4, Dry: 4 (ISO 105 - X12)

Cleaning

Wipe with a damp cloth using a proprietary upholstery shampoo/soap. Professionally dry clean or wipe clean with a damp cloth.

Gabriel by Enea

www.gabriel.dk

Medley/Gr.D by Gabriel

Medley - Product information

Medley is woven in 100% polyester melange yarn with a simple, geometric structure. The tight texture and changing structure of the yarn give the fabric an intense colour depth and a lively surface in multiple shades.

Technical information

Design no. 8613

Application

contract

Composition

100% polyester

Weight

510 g/lm (16.45 oz/lin.yd)

Width

140 cm / 55 inches

Abrasion

75,000 rubs martindale (EN ISO 12947-2)

100,000 double rubs wyzenbeek (ASTM D4157-07) (heavy duty upholstery)

Pilling

4 scale 1-5, max. 5 - EN ISO 12945-2

Light fastness

5-7 scale 1-8, max. 8 - EN ISO 105-B02

Rubbing fastness

4-5/4-5 (wet/dry)
scale 1-5, max. 5 - EN ISO 105x12

Maintenance

wash or dry cleaning P(W)

Medley is made of polyester which is a material suited for environments with special requirements for cleaning.

60°C shrinkage max. 1%.

74°C shrinkage max. 3%.

US ACT

AATCC 16 Light fastness

AATCC 8 or 116 Wet/dry crocking

ASTM D3511 Pilling

ASTM D4157-07 Wyz abrasion (heavy-duty)

CA TB 117-2013

ASTM E 84 Class I

Acoustic test air flow resistance

EN 29053 & ISO 9053-1

Acoustic test sound absorption

ISO 354 & ISO 11654

Flammability

BS EN 1021 1&2 Cigarette and Match

BS EN 1021-1 Cigarette

hBS 476 Part 7, class 2

Class Uno UNI 9174 - UNI 8457

ÖNORM A3800-B2-B3825-Q1 UK

CA TB 117-2013

ASTM E 84 Class I

Environment

STANDARD 100 by OEKO-TEX®



60003



60004



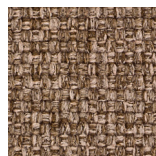
60167



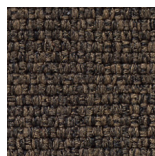
60999



61002



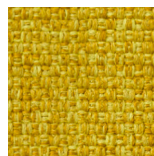
61003



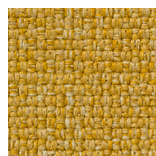
61004



61189



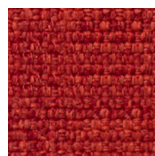
62002



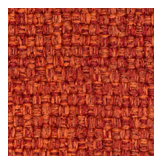
62054



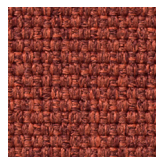
63013



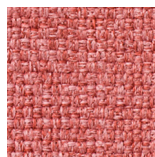
63016



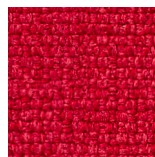
63017



63063



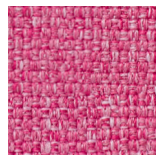
63064



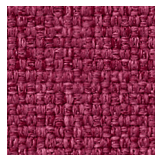
64019



64123



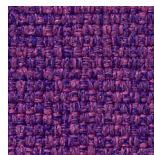
64124



64125



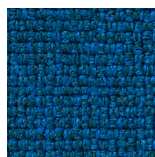
65011



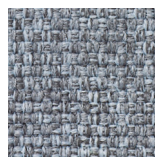
65012



65086



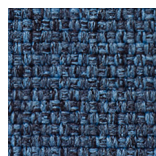
66007



66008



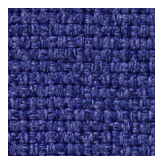
66009



66010



66144



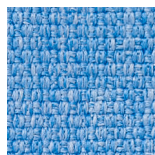
66145



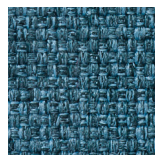
67002



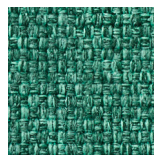
67006



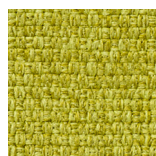
67052



67053



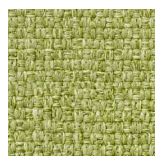
67054



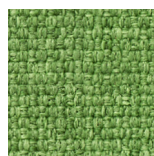
68002



68005



68114



68115

Felicity/Gr.D by Gabriel

Felicity - Product information

Felicity is a unicoloured, multifunctional fabric made from 100% recycled, post-consumer polyester. It offers great utility value and is suitable for a wide range of applications, furniture and interiors.

Technical information

Design no. 2477

Application
contract

Composition

100% post-consumer recycled polyester

Weight

430 g/lm (13.87 oz/lin.yd)

Width

140 cm / 55 inches

Abrasion

90,000 rubs martindale (EN ISO 12947-2)

100,000 double rubs wyzenbeek (ASTM D4157-07) (heavy duty upholstery)

Pilling

5 scale 1-5, max. 5 - EN ISO 12945-2

Light fastness

5-7 scale 1-8, max. 8 - EN ISO 105-B02

Rubbing fastness

4-5/4-5 (wet/dry)

scale 1-5, max. 5 - EN ISO 105x12

Maintenance

wash or dry cleaning P(W)

Felicity is made of polyester which is a material suited for environments with special requirements for cleaning.

40°C shrinkage max. 1,5%.

60°C shrinkage max. 2,5%.

US ACT

ASTM D4157-07 Wyz abrasion (heavy duty) 100k

ASTM D3511 Pilling

AATCC 16 Light fastness

AATCC 8 or 116 Wet/dry crocking

CA TB 117-2013

Acoustic test air flow resistance

EN 29053 & ISO 9053-1

Flammability

BS EN 1021 1&2 Cigarette and Match

BS EN 1021-1 Cigarette

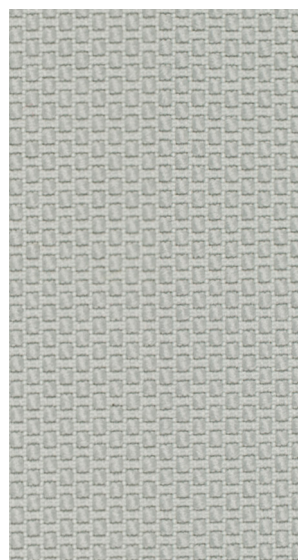
CA TB 117-2013

Environment

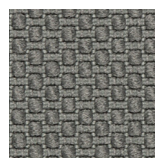
STANDARD 100 by OEKO-TEX®

EU Ecolabel

Cradle to Cradle Certified™ Bronze



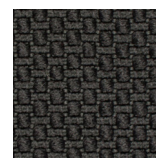
60105



60106



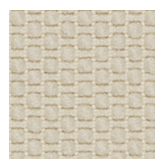
60107



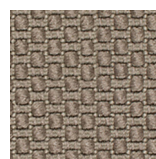
60108



60999



61163



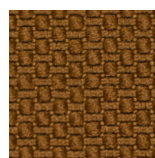
61164



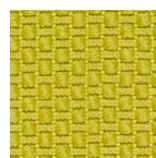
61165



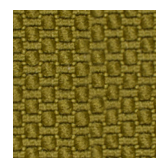
61166



61167



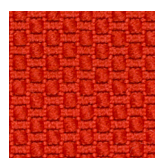
62080



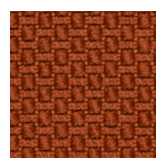
62081



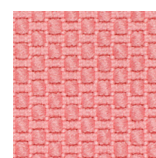
63087



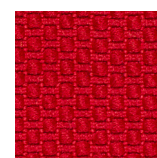
63088



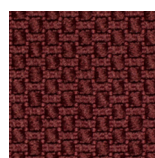
63089



64189



64190



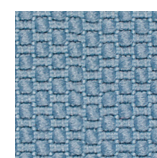
64191



65102



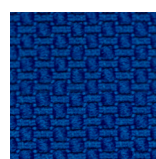
65103



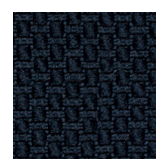
66161



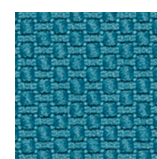
66162



66163



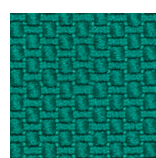
66164



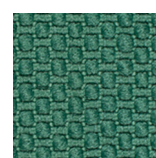
67079



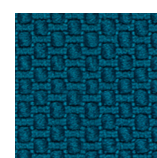
67080



67081



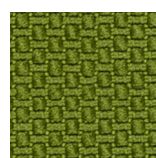
67082



67083



68178



68179

Atlantic/Gr.E by Gabriel

Atlantic - Product information

Atlantic is a high-performance, mono-material fabric made from 100% recyclable polyester, offering a fresh, modern vibe, a discreet relief effect, and an extensive colour palette.

Technical information

Design no. 8690

Application

contract

Composition

100% polyester

Weight

530 g/lm (17.09 oz/lin.yd)

Width

150 cm / 59 inches

Abrasion

110,000 rubs martindale (EN ISO 12947-2)

100,000 double rubs wyzenbeek (ASTM D4157-07) (heavy duty upholstery)

Pilling

4-5 scale 1-5, max. 5 - EN ISO 12945-2

Light fastness

5-7 scale 1-8, max. 8 - EN ISO 105-B02

Rubbing fastness

4-5/4-5 (wet/dry)

scale 1-5, max. 5 - EN ISO 105x12

Maintenance

wash or dry cleaning P(W)

Atlantic is made of polyester which is a material suited for environments with special requirements for cleaning. 60°C shrinkage max 3%.

US ACT

AATCC 16 Light fastness

ASTM D3511 Pilling

ASTM D4157-07 Wyz abrasion (heavy duty)

CA TB 117-2013

ASTM E 84 Class I

AATCC 8 or 116 Wet/dry crocking

Acoustic test air flow resistance

EN 29053 & ISO 9053-1

Flammability

CA TB 117-2013

ASTM E 84 Class I

ÖNORM A3800-B1-B3825-Q1 UK

BS EN 1021-1 Cigarette

BS EN 1021-2 Match

DIN EN 13501-1 B-s1, d0 (glued)

Flammability with

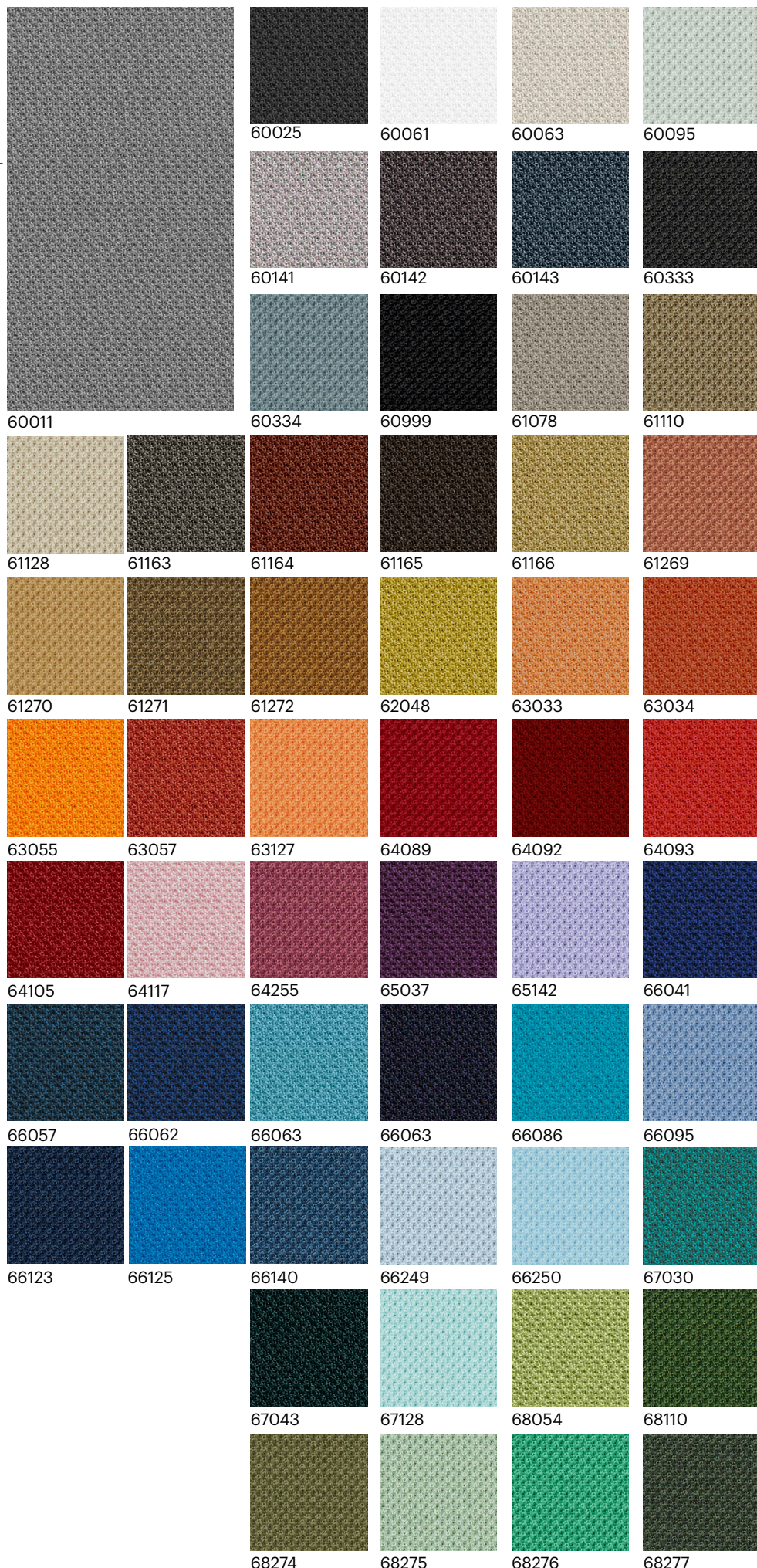
flameretardant treatment Certificates

FAR/JAR 25.853 (a) (i) (ii) (flame retardant)

Environment

STANDARD 100 by OEKO-TEX®

EU Ecolabel



Chili/Gr.E by Gabriel

Chili - Product information

Chili is made from post-consumer recycled flame retardant polyester. The fabric offers superior flame retardancy and is designed for use in environments, where fire safety is an absolute top priority.

Technical information

Design no. 2488

Application
contract

Composition

100% post-consumer recycled polyester fr (fr inside the fiber)

Weight

470 g/lm (15.16 oz./lin.yd)

Width

140 cm / 55 inches

Abrasion

60,000 rubs martindale (EN ISO 12947-2)

100,000 double rubs wyzenbeek (ASTM D4157-07) (heavy duty upholstery)

Pilling

4-5 scale 1-5, max. 5 - EN ISO 12945-2

Light fastness

5-8 scale 1-8, max. 8 - EN ISO 105-B02

Rubbing fastness

4-5/4-5 (wet/dry)

scale 1-5, max. 5 - EN ISO 105x12

Maintenance

wash or dry cleaning P(W)

Chili is made of polyester which is a material suited for environments with special requirements for cleaning.
60°C shrinkage max. 3%.

US ACT

AATCC 16 Light fastness

AATCC 8 or 116 Wet/dry crocking

ASTM D4157-07 Wyz abrasion (heavy-duty)

CA TB 117-2013

ASTM D3511 Pilling

Acoustic test air flow resistance

EN 29053 & ISO 9053-1

Flammability

CA TB 117-2013

NFP 92-503/504/505 M1

DIN 4102 - B1

Class Uno UNI 9175 Class 1 I EMME

BS EN 1021 1&2 Cigarette and Match

BS EN 1021-1 Cigarette

BS 7176 Medium hazard

BS 5852 Crib 5

AM 18 - NF D 60-013-(only for fabric)

DIN EN 13501-1 B-s1,d0

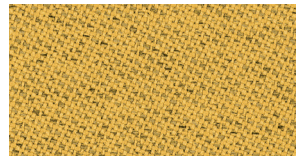
Environment

STANDARD 100 by OEKO-TEX®

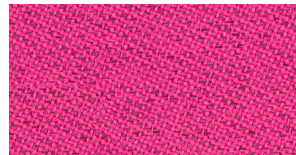
EU Ecolabel



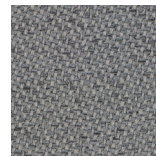
60081



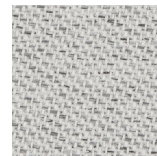
62086



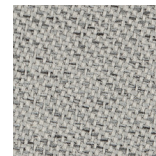
64197



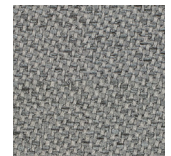
60083



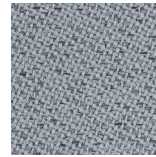
60114



60115



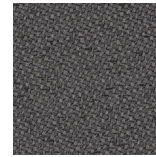
60116



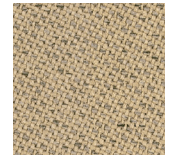
60117



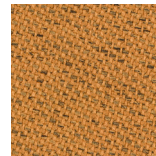
60999



61171



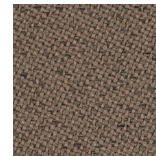
61172



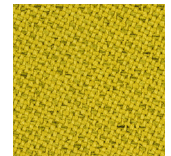
61173



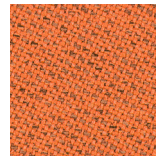
61174



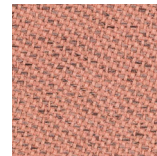
61175



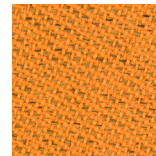
62085



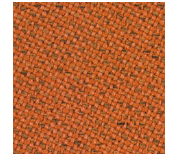
63090



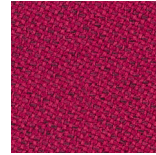
63092



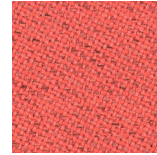
63093



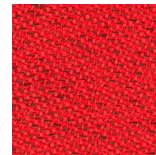
63099



64198



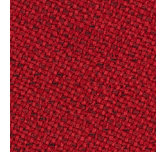
64199



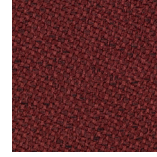
64200



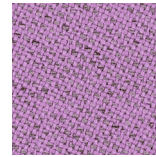
64201



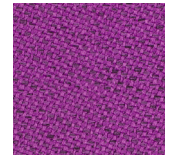
64202



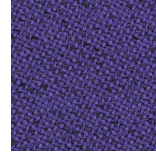
64203



65107



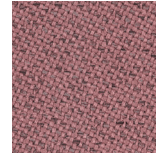
65108



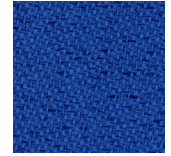
65109



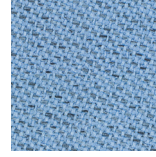
65110



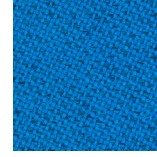
65111



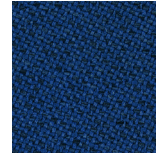
66171



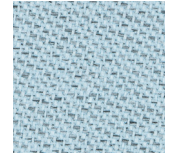
66172



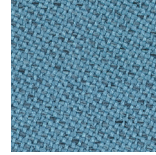
66173



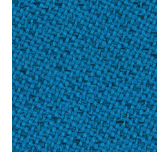
66174



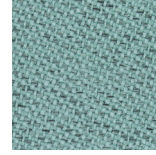
66175



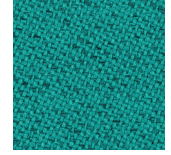
66176



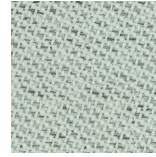
67085



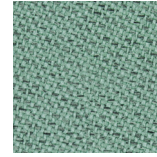
68189



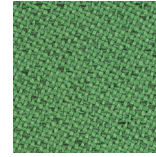
68190



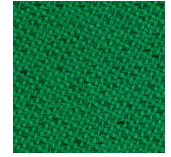
68191



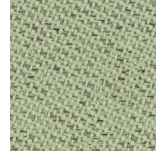
68192



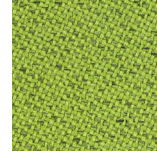
68193



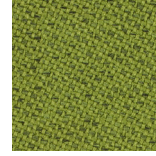
68194



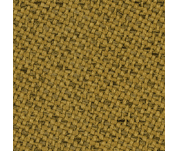
68195



68196



68197



68198

Cura/Gr.F by Gabriel

Cura Product information

Cura is a multi-purpose, two-coloured upholstery fabric made from 98% post-consumer recycled polyester. Use Cura for office furniture or lounge seating to transform workplaces into homey interiors.

Technical information

Design no. 2480/2544

Application

contract - soft seating

Composition

98% post-consumer recycled polyester / 2% polyester

Weight

420 g/lm (13,55 oz/lin.yd)

Width

140 cm / 55 inches

Abrasion

100,000 rubs martindale (EN ISO 12947-2)

100,000 double rubs wyzenbeek (ASTM D4157-07) (heavy duty upholstery)

Pilling

4-5 scale 1-5, max. 5 - EN ISO 12945-2

Light fastness

5-8 scale 1-8, max. 8 - EN ISO 105-B02

Rubbing fastness

4-5/4-5 (wet/dry)

scale 1-5, max. 5 - EN ISO 105x12

Maintenance

wash or dry cleaning P(W)

Cura is made of polyester which is a material suited for environments with special requirements for cleaning.

40°C shrinkage max. 1%.

60°C shrinkage max. 2%.

US ACT

ASTM D4157-07 Wyz abrasion (heavyduty) 100k.

ASTM D3511 Pilling

CA TB 117-2013

AATCC 16 Light fastness

AATCC 8 or 116 Wet/dry crocking

Acoustic test air flow resistance

EN 29053 & ISO 9053-1

Flammability

BS EN 1021 1&2 Cigarette and Match

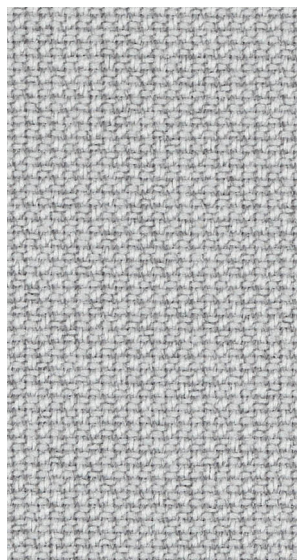
CA TB 117-2013

ASTM E 84 Class 1

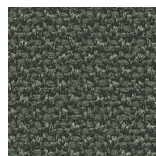
Environment

STANDARD 100 by OEKO-TEX®

EU Ecolabel



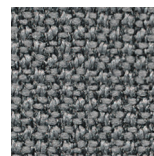
60000



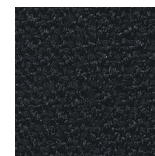
60019



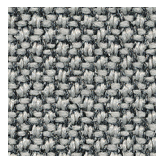
60109



60110



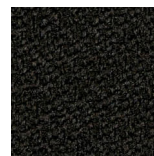
60111



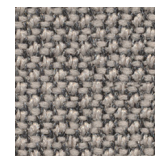
60112



60327



60999



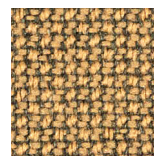
61168



61169



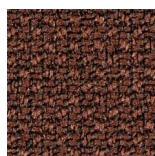
61232



61233



61257



61258



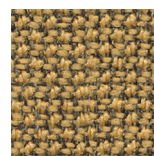
61259



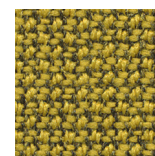
61260



62082



62083



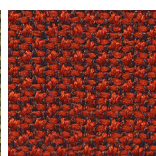
62084



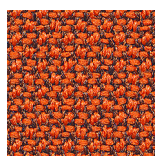
62125



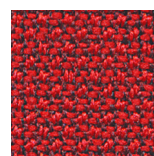
62126



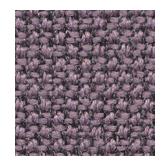
63012



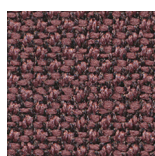
63078



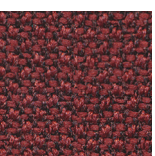
64013



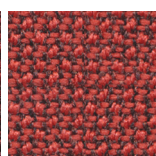
64194



64195



64196



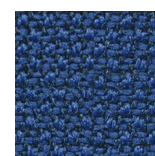
64197



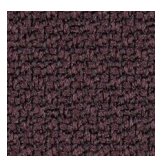
64240



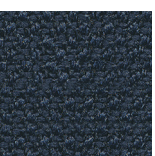
64252



65105



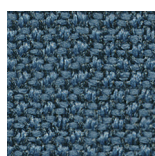
65137



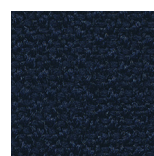
66165



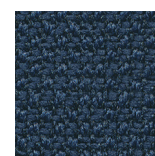
66166



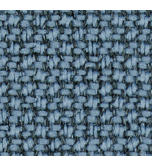
66167



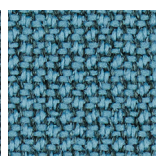
66169



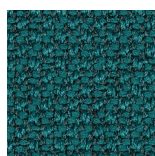
66170



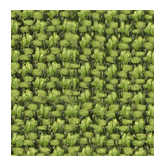
66239



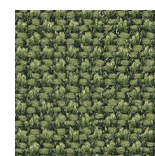
66240



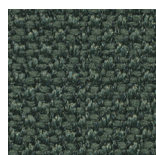
67084



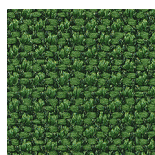
68180



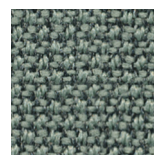
68181



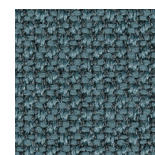
68182



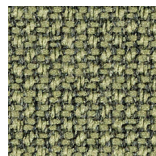
68183



68186



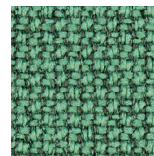
68187



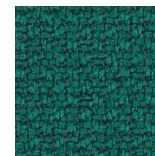
68261



68262



68263



68264

Step/Gr.F by Gabriel

Step - Part I

Product information

Step is designed for the creation of modern, inclusive spaces with room for a diversity of people and tasks - from activity-based work zones to social spaces.

Technical information

Design no. 2440

Application contract

Composition

100% Trevira cs

Weight

470 g/lm (15,16 oz/lin.yd)

Width

140 cm / 55 inches

Abrasion

100,000 rubs martindale (EN ISO 12947-2)

100,000 double rubs wyzenbeek (ASTM D4157-07) (heavy duty upholstery)

Pilling

4-5 scale 1-5, max. 5 - EN ISO 12945-2

Light fastness

5-7 scale 1-8, max. 8 - EN ISO 105-B02

Rubbing fastness

4-5/4-5 (wet/dry)

scale 1-5, max. 5 - EN ISO 105x12

Maintenance

wash or dry cleaning P(W)
Step is made of Trevira CS which is a polyester material suited for environments with special requirements for cleaning. can be wiped with Virkon S, Actichlor Plus, Prime Source ren-93 or Ethanol (70-85%).

60°C shrinkage max. 3%.

74° shrinkage max. 5%.

US ACT

AATCC 16 Light fastness

ASTM D3511 Pilling

ASTM D4157-07 Wyz abrasion (heavyduty)

CA TB 117-2013

AATCC 8 or 116 Wet/dry crocking

Acoustic test air flow resistance

EN 29053 & ISO 9053-1

Acoustic test sound absorption

ISO 354 & ISO 11654

Flammability

IMO MSC 307(88) Annex 1 part 8

MED Certificate IMO - DIN 4102 - B1

NFP 92-503/504/505 M1

BS EN 1021 1&2 Cigarette and Match

BS EN 1021-1 Cigarette

BS 5852 Crib 5

Class Uno UNI 9174 - UNI 8457

ÖNORM A3800-B2-B3825-Q1 UK

FAR/JAR 25.853 (a) (i) (ii)

BS 7176 Medium hazard

AM 18 - NF D 60-013-(only for fabric)

CA TB 117-2013

Class Uno UNI 9175 Class 1 I EMME

DIN EN 13501-1 B-s1, d0

IMO MSC 307(88) Annex 1 part 8 UK

MED Certificate IMO UK

CAN/ULC-S102.2 - CAN/ULC -S109

Environment

STANDARD 100 by OEKO-TEX®

EU Ecolabel



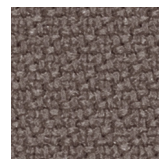
60004



60011



60021



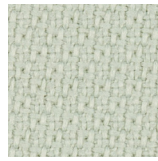
60090



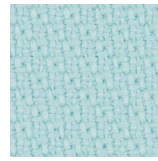
60091



60092



60745



60746



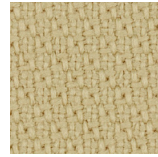
60999



61103



61149



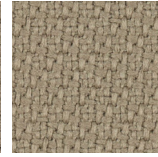
61787



61788



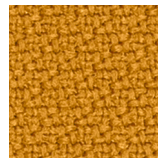
61789



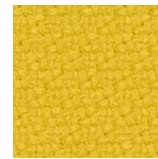
61791



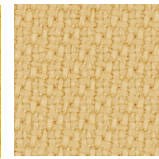
61793



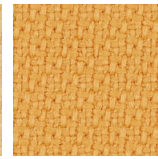
62057



62073



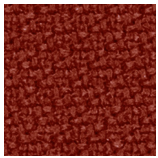
62744



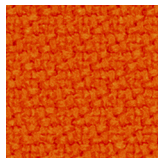
62746



63012



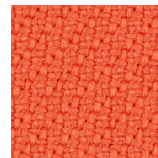
63075



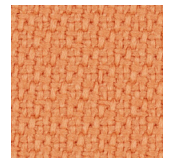
63082



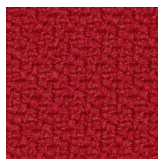
63736



63738



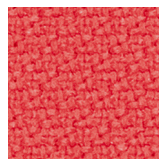
63739



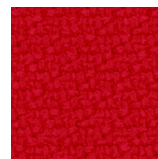
64013



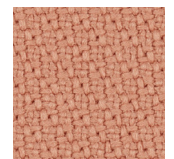
64159



64178



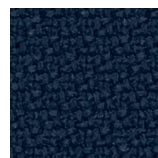
64179



64767



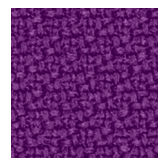
64770



65011



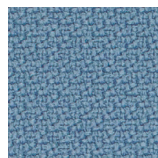
65018



65023



65047



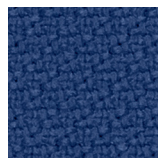
66018



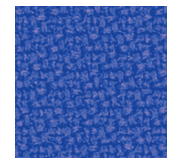
66019



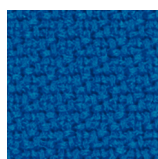
66148



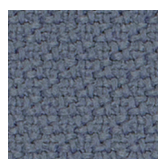
66149



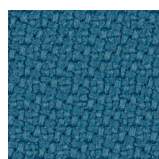
66150



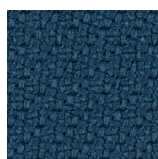
66151



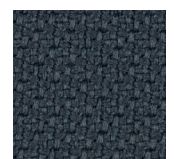
66152



66763



66764



66765

Step/Gr.F by Gabriel

Step - Part II

Product information

Step is designed for the creation of modern, inclusive spaces with room for a diversity of people and tasks - from activity-based work zones to social spaces.

Technical information

Design no. 2440

Application contract

Composition

100% Trevira cs

Weight

470 g/lm (15,16 oz/lin.yd)

Width

140 cm / 55 inches

Abrasion

100,000 rubs martindale (EN ISO 12947-2)

100,000 double rubs wyzenbeek (ASTM D4157-07) (heavy duty upholstery)

Pilling

4-5 scale 1-5, max. 5 - EN ISO 12945-2

Light fastness

5-7 scale 1-8, max. 8 - EN ISO 105-B02

Rubbing fastness

4-5/4-5 (wet/dry)

scale 1-5, max. 5 - EN ISO 105x12

Maintenance

wash or dry cleaning P(W)
Step is made of Trevira CS which is a polyester material suited for environments with special requirements for cleaning. can be wiped with Virkon S, Actichlor Plus, Prime Source ren-93 or Ethanol (70-85%).

60°C shrinkage max. 3%.

74° shrinkage max. 5%.

US ACT

AATCC 16 Light fastness

ASTM D3511 Pilling

ASTM D4157-07 Wyz abrasion (heavyduty)

CA TB 117-2013

AATCC 8 or 116 Wet/dry crocking

Acoustic test air flow resistance

EN 29053 & ISO 9053-1

Acoustic test sound absorption

ISO 354 & ISO 11654

Flammability

IMO MSC 307(88) Annex 1 part 8

MED Certificate IMO - DIN 4102 - B1

NFP 92-503/504/505 M1

BS EN 1021 1&2 Cigarette and Match

BS EN 1021-1 Cigarette

BS 5852 Crib 5

Class Uno UNI 9174 - UNI 8457

ÖNORM A3800-B2-B3825-Q1 UK

FAR/JAR 25.853 (a) (i) (ii)

BS 7176 Medium hazard

AM 18 - NF D 60-013-(only for fabric)

CA TB 117-2013

Class Uno UNI 9175 Class 1 I EMME

DIN EN 13501-1 B-s1, d0

IMO MSC 307(88) Annex 1 part 8 UK

MED Certificate IMO UK

CAN/ULC-S102.2 - CAN/ULC -S109

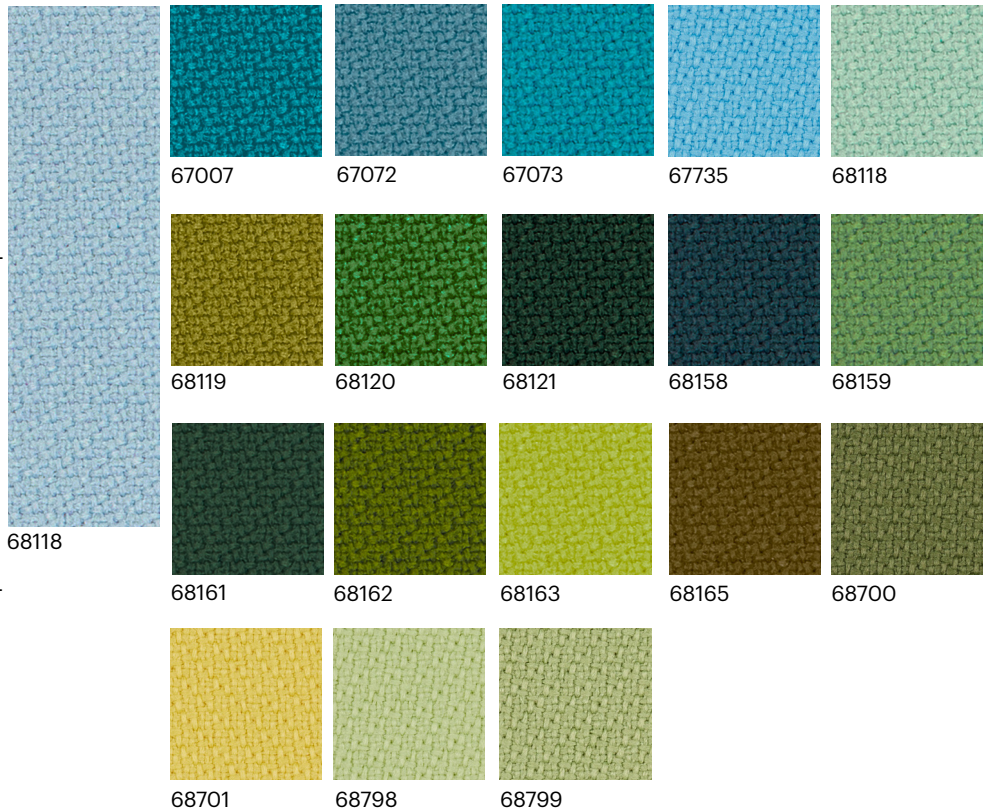
Environment

STANDARD 100 by OEKO-TEX®

EU Ecolabel

enea

www.eneadesign.com



67007

67072

67073

67735

68118

68119

68120

68121

68158

68159

68161

68162

68163

68165

68700

68701

68798

68799

68118

Step M./Gr.F by Gabriel

Step M. - Part I

Product information

Step Melange is designed for the creation of modern, inclusive spaces with room for a diversity of people and tasks - from activity-based work zones to social spaces.

Technical information

Design no. 2441/2442

Application contract

Composition

100% Trevira cs

Weight

470 g/lm (15.16 oz/lin.yd)

Width

140 cm / 55 inches

60004

Abrasion

100,000 rubs martindale (EN ISO 12947-2)

100,000 double rubs wyzenbeek (ASTM D4157-07) (heavy duty upholstery)

Pilling

4-5 scale 1-5, max. 5 - EN ISO 12945-2

Light fastness

5-7 scale 1-8, max. 8 - EN ISO 105-B02

Rubbing fastness

4-5/4-5 (wet/dry)

scale 1-5, max. 5 - EN ISO 105x12

Maintenance

wash or dry cleaning P(W)

Step Melange is made of Trevira CS which is a polyester material suited for environments with special requirements for cleaning.

can be wiped with Virkon S, Actichlor Plus, Prime Source ren-93 or Ethanol (70-85%).

60°C shrinkage max. 3%.

74° shrinkage max. 5%.

US ACT

AATCC 16 Light fastness

AATCC 8 or 116 Wet/dry crocking

ASTM D3511 Pilling

ASTM D4157-07 Wyz abrasion (heavyduty)

CA TB 117-2013

Flammability

IMO MSC 307(88) Annex 1 part 8

MED Certificate IMO - DIN 4102 - B1

NFP 92-503/504/505 M1

BS EN 1021 1&2 Cigarette and Match

BS EN 1021-1 Cigarette

BS 5852 Crib 5

ÖNORM A3800-B2-B3825-Q1 UK

FAR/JAR 25.853 (a) (i) (ii)

BS 7176 Medium hazard

AM 18 - NF D 60-013-(only for fabric)

CA TB 117-2013

Class Uno UNI 9175 Class 1 I EMME

DIN EN 13501-1 B-s1,d0

IMO MSC 307(88) Annex 1 part 8 UK

MED Certificate IMO UK

CAN/ULC-S102.2 - CAN/ULC-S109



60011

60021

60090

60092

60345

60346

61103

61104

61149

61151

61152

61286

61287

61288

61289

61291

61293

62057

62073

62143

62144

62146

63075

63082

63136

63137

63138

63139

64013

64159

64178

64179

64267

64270

65011

65018

65023

65047

66018

66019

66148

66149

66150

66151

66152

Environment

STANDARD 100 by OEKO-TEX®

EU Ecolabel

enea
www.eneadesign.com

Step M./Gr.F by Gabriel

Step M. - Part II

Product information

Step Melange is designed for the creation of modern, inclusive spaces with room for a diversity of people and tasks - from activity-based work zones to social spaces.

Technical information

Design no. 2441/2442

Application contract

Composition

100% Trevira cs

Weight

470 g/lm (15.16 oz/lin.yd)

Width

140 cm / 55 inches

66263

Abrasion

100,000 rubs martindale (EN ISO 12947-2)

100,000 double rubs wyzenbeek (ASTM D4157-07) (heavy duty upholstery)

Pilling

4-5 scale 1-5, max. 5 - EN ISO 12945-2

Light fastness

5-7 scale 1-8, max. 8 - EN ISO 105-B02

Rubbing fastness

4-5/4-5 (wet/dry)

scale 1-5, max. 5 - EN ISO 105x12

Maintenance

wash or dry cleaning P(W)

Step Melange is made of Trevira CS which is a polyester material suited for environments with special requirements for cleaning.

can be wiped with Virkon S, Actichlor Plus, Prime Source ren-93 or Ethanol (70-85%).

60°C shrinkage max. 3%.

74° shrinkage max. 5%.

US ACT

AATCC 16 Light fastness

AATCC 8 or 116 Wet/dry crocking

ASTM D3511 Pilling

ASTM D4157-07 Wyz abrasion (heavyduty)

CA TB 117-2013

Flammability

IMO MSC 307(88) Annex 1 part 8

MED Certificate IMO - DIN 4102 - B1

NFP 92-503/504/505 M1

BS EN 1021 1&2 Cigarette and Match

BS EN 1021-1 Cigarette

BS 5852 Crib 5

ÖNORM A3800-B2-B3825-Q1 UK

FAR/JAR 25.853 (a) (i) (ii)

BS 7176 Medium hazard

AM 18 - NF D 60-013-(only for fabric)

CA TB 117-2013

Class Uno UNI 9175 Class 1 I EMME

DIN EN 13501-1 B-s1,d0

IMO MSC 307(88) Annex 1 part 8 UK

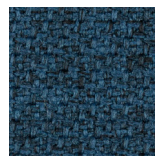
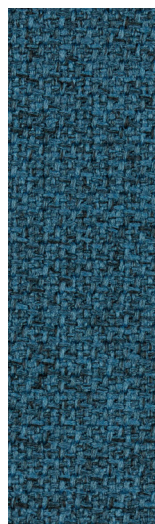
MED Certificate IMO UK

CAN/ULC-S102.2 - CAN/ULC-S109

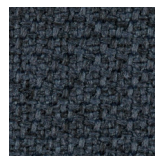
Environment

STANDARD 100 by OEKO-TEX®

EU Ecolabel



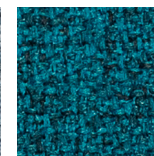
66264



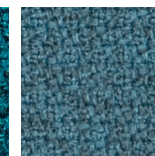
66265



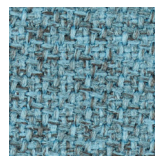
67004



67007



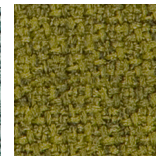
67072



67135



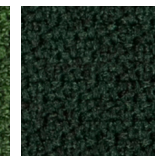
68118



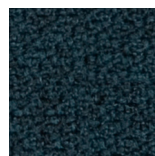
68119



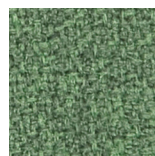
68120



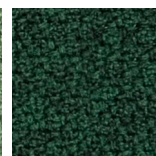
68121



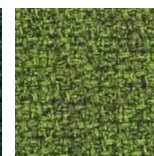
68158



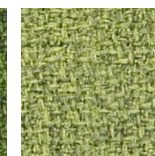
68159



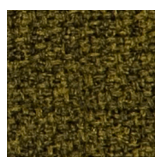
68161



68162



68163



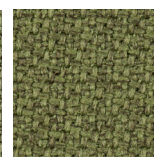
68165



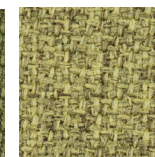
68298



68299



68300



68301

Europost/Gr.G by Gabriel

Europost - Product information

Europost has a popular felted character which gives the upholstered surface a uniform, simple and clean expression. The wool's sheen and quality give the individual colours life and depth.

Technical information

Design no. 1701

Application
contract

Composition

100% New Zealand wool

Weight

800 g/lm (25.80 oz/lin.yd)

Width

140 cm / 55 inches

Abrasion

50,000 rubs martindale (EN ISO 12947-2)

Pilling

4 scale 1-5, max. 5 - EN ISO 12945-2

Light fastness

5-7 scale 1-8, max. 8 - EN ISO 105-B02

Rubbing fastness

4-5/4-5 (wet/dry)

scale 1-5, max. 5 - EN ISO 105x12

Maintenance

dry cleaning P(S)

US ACT

AATCC 16 Light fastness

CA TB 117-2013

ASTM E 84 Class II

NFPA 286 Room corner fire test

AATCC 8 or 116 Wet/dry crocking

Acoustic test air flow resistance

EN 29053 & ISO 9053-1

Acoustic test sound absorption

ISO 354 & ISO 11654

Flammability

BS EN 1021 1&2 Cigarette and Match

ÖNORM A3800-B2-B3825-Q1 UK

Class Uno UNI 9175 Class 1 I EMME

IMO MSC 307(88) Annex 1 part 8

MED Certificate IMO

IMO MSC 307(88) Annex 1 part 8 UK

MED Certificate IMO UK

CA TB 117-2013

ASTM E 84 Class II

NFPA 286 Room corner fire test

DIN 4102 - B2

BS 476 Part 7, class 1

BS 5852 Part 1 0,1 Cigarette & Match

Flammability with

flameretardant treatment

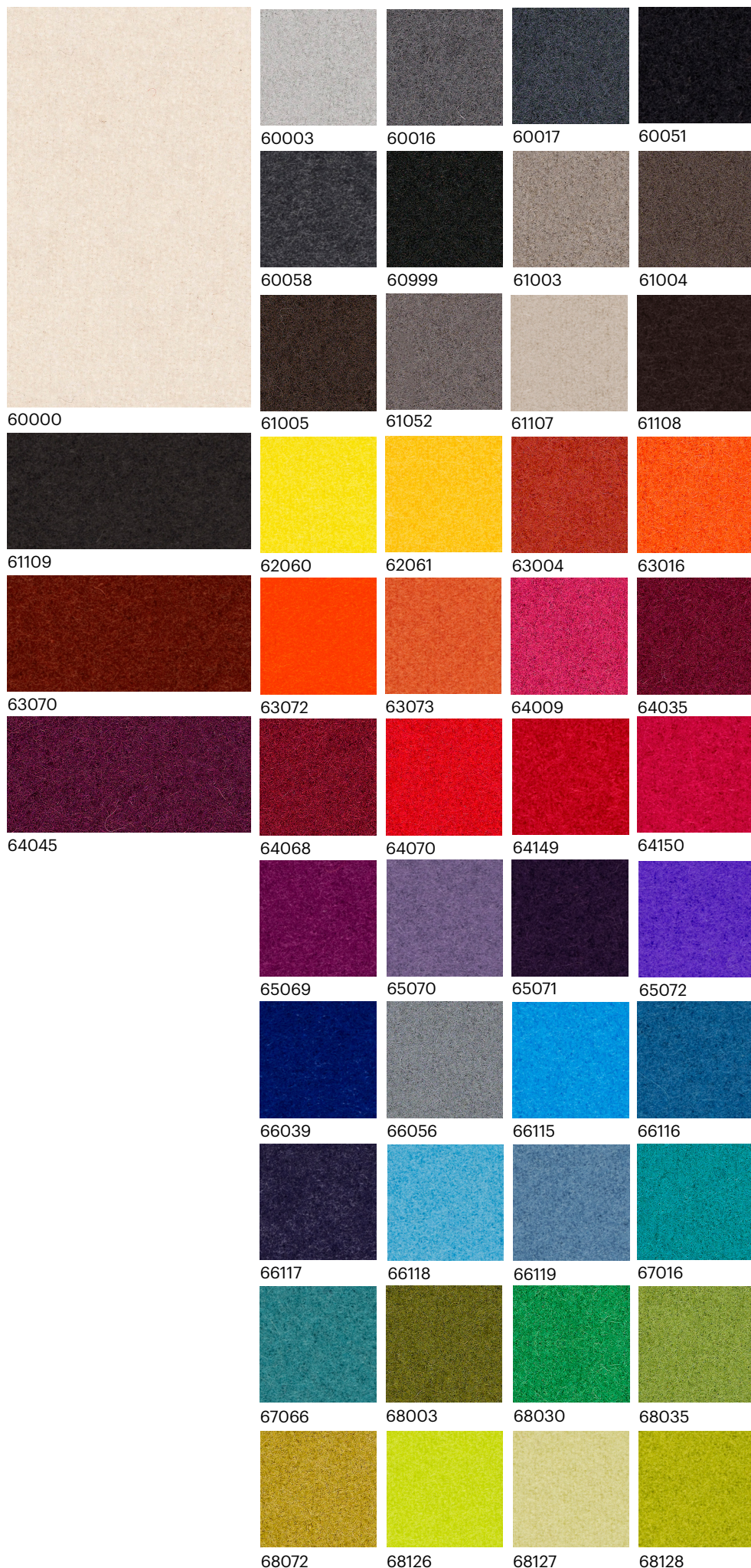
BS 5852 Crib 5 (flame retardant)

BS 5852 Crib 5 (flame retardant)

Environment

STANDARD 100 by OEKO-TEX®

EU Ecolabel



Fame/Gr.G by Gabriel

Fame - Product information

Fame is a unique woollen upholstery fabric with a wearability of 200,000 Martindale, and at the same time is extra soft and stretchable. The colour scale is very elegant and vibrant.

Technical information

Design no. 2409

Application contract

Composition

95% New Zealand wool / 5% polyamide

Weight

630 g/lm (20.32 oz/lin.yd)

Width

140 cm / 55 inches

Abrasion

200,000 rubs martindale (EN ISO 12947-2)

140,000 double rubs wyzenbeek (ASTM D4157-07) (heavy duty upholstery)

Pilling

4 scale 1-5, max. 5 - EN ISO 12945-2

Light fastness

5-7 scale 1-8, max. 8 - EN ISO 105-B02

Rubbing fastness

4-5/4-5 (wet/dry)

scale 1-5, max. 5 - EN ISO 105x12

Maintenance

dry cleaning P(S)

US ACT

AATCC 16 Light fastness

AATCC 8 or 116 Wet/dry crocking

ASTM D4970 Pilling

ASTM D4966 Martindale (heavy duty)

CA TB 117-2013

Acoustic test air flow resistance

EN 29053 & ISO 9053-1

Acoustic test sound absorption

ISO 354 & ISO 11654

Flammability

BS EN 1021-1 Cigarette

BS EN 1021-2 Match

BS 5852 Crib 5

CA TB 117-2013

Class Uno UNI 9175 Class 1 | EMME

AM 18 - NF D 60-013-(only for fabric)

BS 5852 Part 1 0,1 Cigarette & match

ÖNORM A3800-B1-B3825-Q1 UK

IMO MSC 307(88) Annex 1 part 8

MED Certificate IMO

IMO MSC 307(88) Annex 1 part 8 UK

MED Certificate IMO UK

BS 476 Part 7, class 1

Flammability with

flameretardant treatment

DIN 4102 - B1

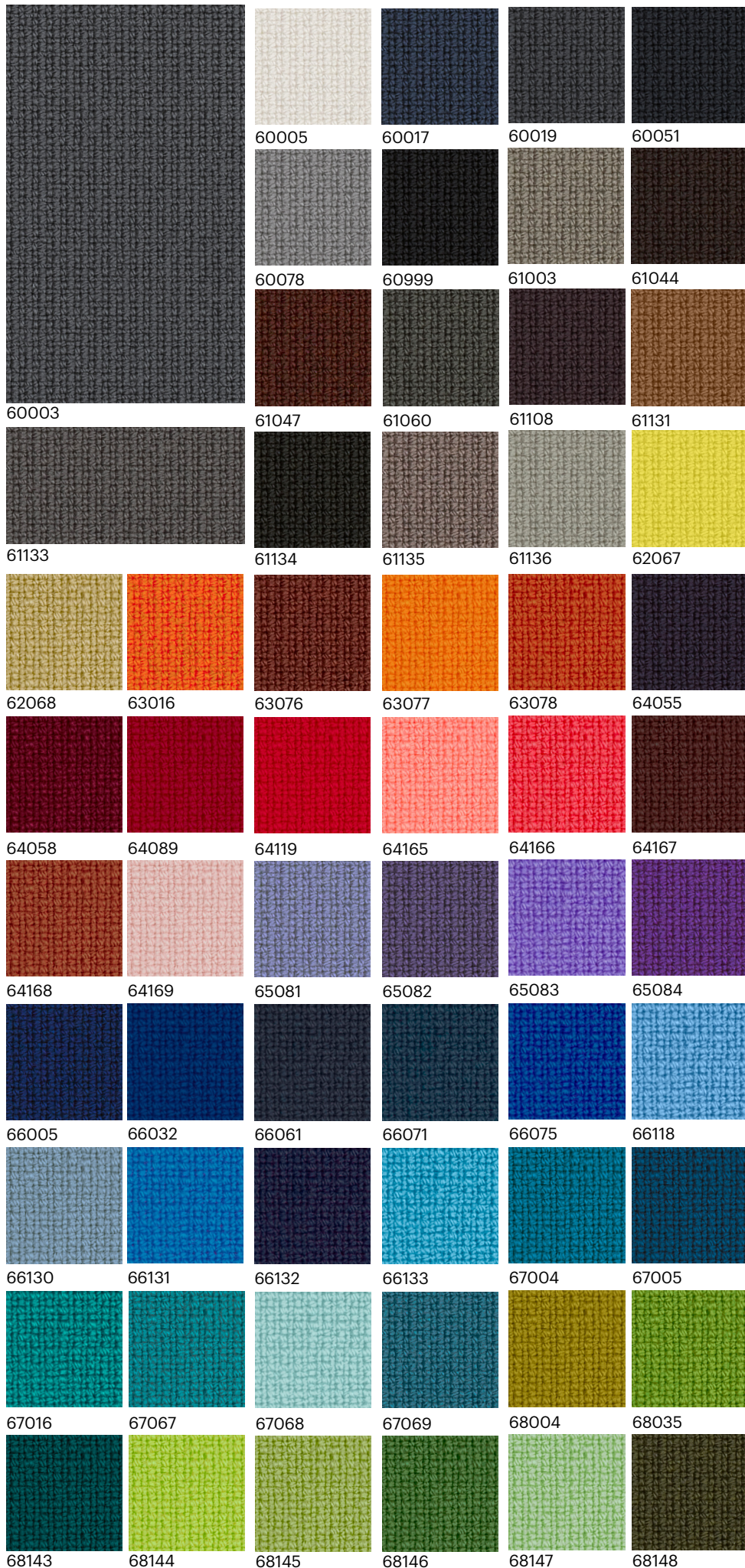
BS 5852 Crib 5 (flame retardant)

BS 7176 Medium hazard

Environment

STANDARD 100 by OEKO-TEX®

EU Ecolabel



Crisp/Gr.H by Gabriel

Crisp - Product information

Crisp is a tightly woven wool fabric distinguished by its vibrant surface in multiple shades. With its excellent stretch properties, Crisp offers complete freedom of design and is suitable for upholstery of even complex shapes and forms.

Technical information

Design no. 2424

Application

contract - soft seating

Composition

93% New Zealand wool / 7% polyamide

Weight

460 g/lm (14.84 oz/lin.yd)

Width

140 cm / 55 inches

Abrasion

200,000 rubs martindale (EN ISO 12947-2)

200,000 double rubs wyzenbeek (ASTM D4157-07) (heavy duty upholstery)

Pilling

4-5 scale 1-5, max. 5 - EN ISO 12945-2

Light fastness

5-7 scale 1-8, max. 8 - EN ISO 105-B02

Rubbing fastness

4-5/4-5 (wet/dry)

scale 1-5, max. 5 - EN ISO 105x12

Maintenance

dry cleaning P(S)

US ACT

AATCC 16 Light fastness

ASTM D4970 Pilling

ASTM D4966 Martindale (heavy duty)

CA TB 117-2013

AATCC 8 or 116 Wet/dry crocking

Flammability

BS 5852 Part 1 0,1 Cigarette & match

BS 476 Part 7, class 2

BS EN 1021 1&2 Cigarette and Match

Class Uno UNI 9175 Class 1 | EMME

CA TB 117-2013

IMO MSC 307(88) Annex 1 part 8

MED Certificate IMO

IMO MSC 307(88) Annex 1 part 8 UK

MED Certificate IMO UK

ÖNORM A3800-B2-B3825-Q1 UK

Acoustic test air flow resistance

EN 29053 & ISO 9053-1

Flammability with flameretardant treatment

BS 5852 Crib 5

BS 7176 Medium hazard

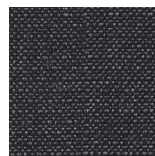
Environment

STANDARD 100 by OEKO-TEX®

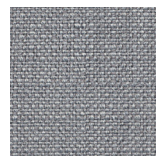
EU Ecolabel



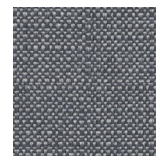
4011



4013



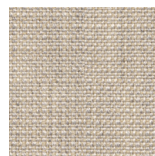
4021



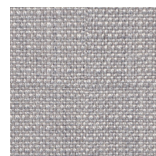
4022



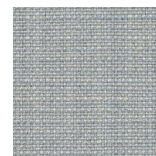
4031



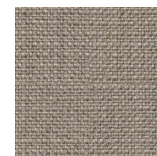
4032



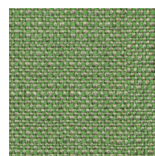
4033



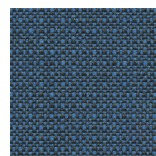
4034



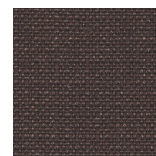
4115



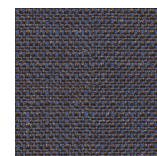
4117



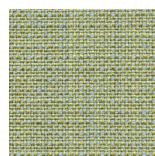
4122



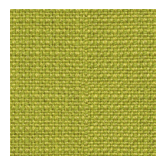
4123



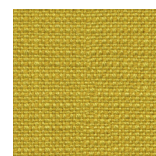
4125



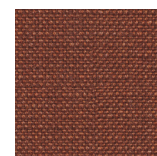
4201



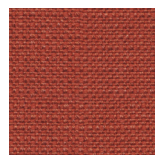
4203



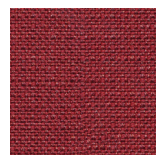
4211



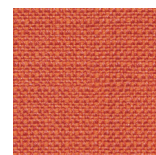
4301



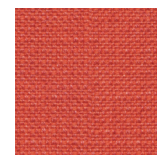
4302



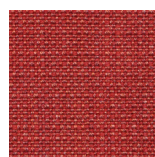
4411



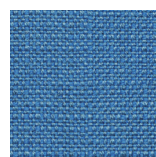
4430



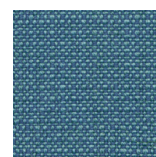
4431



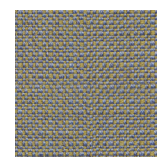
4432



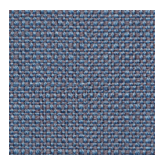
4601



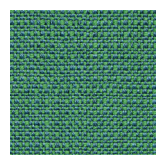
4602



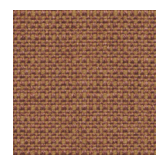
4603



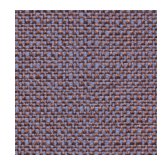
4604



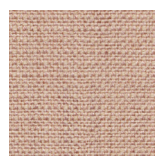
4605



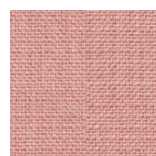
4701



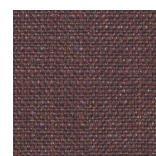
4702



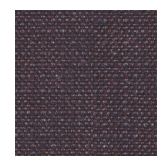
4711



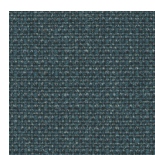
4712



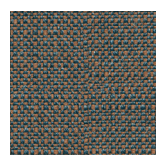
4721



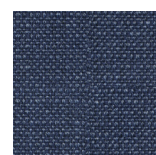
4722



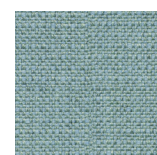
4723



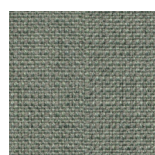
4731



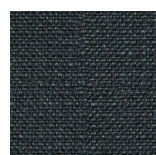
4741



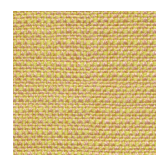
4751



4752



4761



4771

Kvadrat by Enea

www.kvadrat.dk

Revive/Gr.F by Kvadrat

Revive - Product information

Revive 1+2 are vibrant upholstery textiles designed by Georgina Wright. Both are made from post-consumer recycled polyester (PET) and are especially created with a focus to reduce the environmental impact both in production and natural resources.

The designs of Revive 1+2 are inspired by the textures, colours and materials of harbours and fishing boats. They each comprise two unicolours, one in the warp and one in the weft. These are either tone-in-tone or slightly contrasting. This ensures the designs complement each other well.

Technical information

Revive 1 - 0144

Application

Offices, hotels, institutions, domestic use. Great durability.

Composition

100% Recycled polyester FR

Weight

420 g/lin.m

Width

140 cm / 55 inches

Abrasion

60,000 rubs martindale (EN ISO 12947)

Pilling

4-5 scale 1-5, max. 5 - EN ISO 12945

Light fastness

5 scale 1-8, max. 8 - EN ISO 105-B02

Rubbing fastness

4-5/5 (wet/dry)

scale 1-5, max. 5 - EN ISO 105x12

Care

Please, see the ISO symbols.

60°C shrinkage max. 1%.

Flammability

DIN 4102 B1

EN 1021-1/2

IMO FTP Code 2010 Part 8

UNI 9175 1IM

US Cal. Bull. 117-2013

ÖNORM B1/ Q1

NF D 60 013 with treatment

SN 198 898 5.3 with treatment

AS/NZS 3837, class 1

BS 5852 ignition source 3

BS 5852 Crib 5 with treatment

BS 5852 part 1 with treatment

GB 50222 B1 with treatment

UNI 9177 Classe 1

Environment

Environmental Product Declaration,

EN15804

Reduced emissions Greenguard and

Greenguard Gold certified



Field/Gr.G by Kvadrat

Field - Product information

Designed by Alfredo Häberli, Field 2 is an upholstery textile characterised by intriguing colour combinations and an intricate chequered pattern. Originally inspired by the classic Kvadrat textile Hallingdal 65, it comes in an updated palette that offers 22 new colourways.

Technical information

Field 2 - 0123

Application

Offices, hotels, institutions, domestic use. Great durability.

Composition

100% Trevira CS

Weight

450 g/lin.m

Width

140 cm / 55 inches

Abrasion

100,000 rubs martindale (EN ISO 12947)

Pilling

4-5 scale 1-5, max. 5 - EN ISO 12945

Light fastness

6-7 scale 1-8, max. 8 - EN ISO 105-B02

Rubbing fastness

4-5/4-5 (wet/dry)

scale 1-5, max. 5 - EN ISO 105x12

Care

Please, see the ISO symbols.

60°C shrinkage max. 2%.

Sound absorption

0.55 en ISO 354/Class D (flat)

0.85 Class B (waved)

Airflow 431 Pa s/m

Flammability

BS 5852 Crib 5

BS 5852 part 1, ig. s. 0

DIN 4102 B1

EN 1021-1/2

FAR 25.853

IMO FTP Code 2010 Part 8

NF D 60 013

NF P 92 507 M1

UNI 9175 1IM

UNI 9177 Classe 1

US Cal. Bull. 117-2013

ÖNORM B1/ Q1

SN 198 898 5.2

AS/NZS 3837, class 1

EN 13501, B-s1, d0

Environment

Environmental Product Declaration,

EN15804

Reduced emissions Greenguard and

Greenguard Gold certified



Remix/Gr.H

by Kvadrat Part I

Remix - Product information

Remix 3 is an elegant upholstery textile distinguished by exceptional depth of colour, designed by Giulio Ridolfo. It comes in 23 new hues, adding to an already expansive palette which now offers a total of 72 sophisticated colourways. Remix 3 looks unicoloured from a distance but reveals subtle details and colour contrasts when viewed close-up. The textile features a tight, minimalistic weave, and derives its lively colour play from a combination of two different mélange yarns, which each combine up to three hues.

Technical information

Remix 3 - 0113

Application

Offices, hotels, institutions, domestic use. Great durability.

Composition

90% New wool (worsted), 10% Nylon

Weight

415 g/lin.m

Width

140 cm / 55 inches

Abrasion

100,000 rubs martindale (EN ISO 12947)

Pilling

3-4 scale 1-5, max. 5 - EN ISO 12945

Light fastness

5-7 scale 1-8, max. 8 - EN ISO 105-B02

Rubbing fastness

4/4-5 (wet/dry)

scale 1-5, max. 5 - EN ISO 105x12

Care

Please, see the ISO symbols.

Flammability

AS/NZS 1530.3

AS/NZS 3837, class 2

BS 5852 part 1

EN 1021-1/2

IMO FTP Code 2010 Part 8

NF D 60 013

NFPA 260

UNI 9175 1IM

US Cal. Bull. 117-2013

ÖNORM B1/ Q1

BS 5852 Crib 5 with treatment

IMO FTP Code 2010 Part 7 with

SN 198 898 5.3 with treatment

BS 5852 ignition source 3

GB 50222 B1 with treatment

Environment

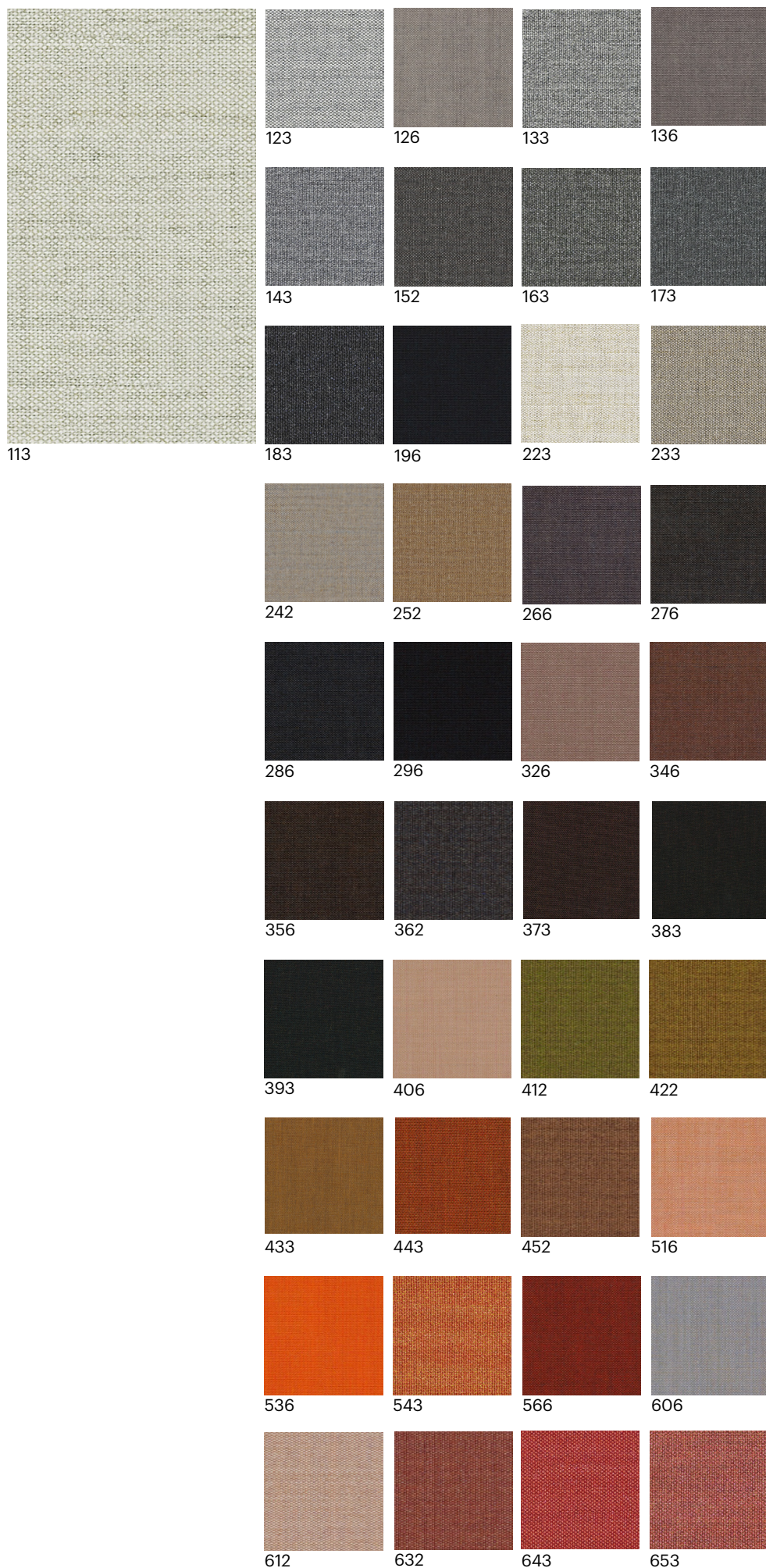
EU Ecolabel Certificate

Environmental Product Declaration,

EN15804

Reduced emissions Greenguard and

Greenguard Gold certified



Remix/Gr.H

by Kvadrat Part II

Remix - Product information

Remix 3 is an elegant upholstery textile distinguished by exceptional depth of colour, designed by Giulio Ridolfo. It comes in 23 new hues, adding to an already expansive palette which now offers a total of 72 sophisticated colourways. Remix 3 looks unicoloured from a distance but reveals subtle details and colour contrasts when viewed close-up. The textile features a tight, minimalistic weave, and derives its lively colour play from a combination of two different mélangé yarns, which each combine up to three hues.

Technical information

Remix 3 - 0113

Application

Offices, hotels, institutions, domestic use. Great durability.

Composition

90% New wool (worsted), 10% Nylon

Weight

415 g/lin.m

Width

140 cm / 55 inches

Abrasion

100,000 rubs martindale (EN ISO 12947)

Pilling

3-4 scale 1-5, max. 5 - EN ISO 12945

Light fastness

5-7 scale 1-8, max. 8 - EN ISO 105-B02

Rubbing fastness

4/4-5 (wet/dry)

scale 1-5, max. 5 - EN ISO 105x12

Care

Please, see the ISO symbols.

Flammability

AS/NZS 1530.3

AS/NZS 3837, class 2

BS 5852 part 1

EN 1021-1/2

IMO FTP Code 2010 Part 8

NF D 60 013

NFPA 260

UNI 9175 1IM

US Cal. Bull. 117-2013

ÖNORM B1/ Q1

BS 5852 Crib 5 with treatment

IMO FTP Code 2010 Part 7 with

SN 198 898 5.3 with treatment

BS 5852 ignition source 3

GB 50222 B1 with treatment

Environment

EU Ecolabel Certificate

Environmental Product Declaration,

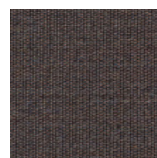
EN15804

Reduced emissions Greenguard and

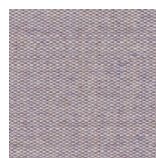
Greenguard Gold certified



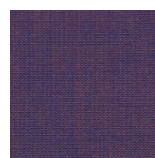
662



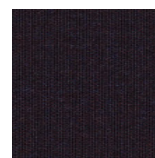
672



682



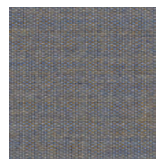
686



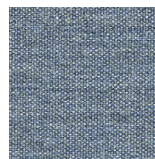
692



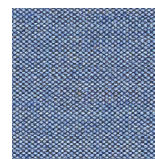
716



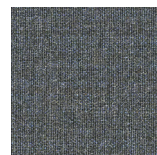
722



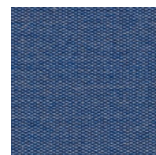
733



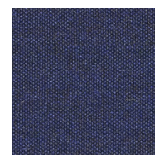
743



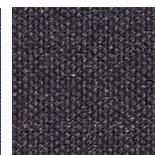
753



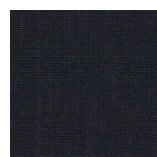
762



773



783



796



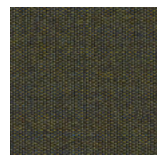
816



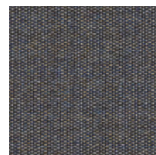
823



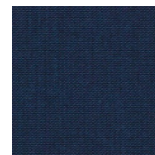
836



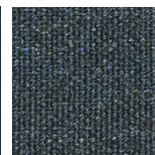
842



852



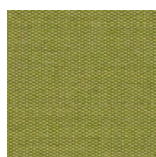
866



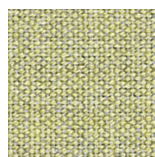
873



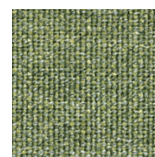
906



912



923



933



942



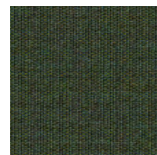
954



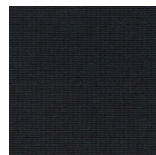
962



973



982



996

Clara/Gr.H by Kvadrat

Clara - Product information

Clara is available in twelve sets of reverse colourways. One version is unicoloured and interwoven with melange stitching, while the other is with unicolour stitching on a melange background. The melange yarns add depth to the look of Clara and combine to vibrant effect with the unicolour yarns. The fabric, which changes appearance according to the position of the viewer, projects a strong sense of volume and richness.

Technical information

Clara 2 - 0647

Application

Offices, hotels, institutions, domestic use. Great durability.

Composition

92% New wool (worsted), 8% Nylon

Weight

400 g/lin.m

Width

138 cm / 54 inches

Abrasion

80,000 rubs martindale (EN ISO 12947)

Pilling

4 scale 1-5, max. 5 - EN ISO 12945

Light fastness

5-7 scale 1-8, max. 8 - EN ISO 105-B02

Rubbing fastness

4/4-5 (wet/dry)

scale 1-5, max. 5 - EN ISO 105x12

Care

Please, see the ISO symbols.

Flammability

AS/NZS 3837

BS 5852 part 1

EN 1021-1/2

IMO FTP Code 2010 Part 8

NF D 60 013

NFPA 260

UNI 9175 1IM

US Cal. Bull. 117-2013

ÖNORM B1/ Q1

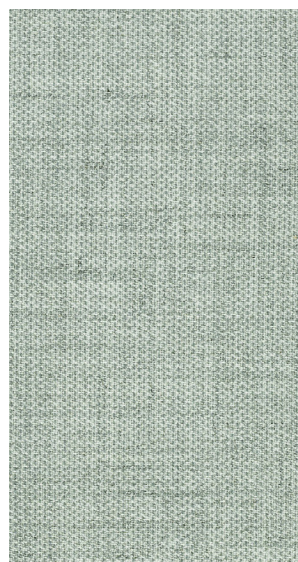
BS 5852 Crib 5 with treatment

Environment

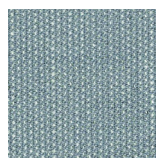
EU Ecolabel Certificate

Environmental Product Declaration,
EN15804

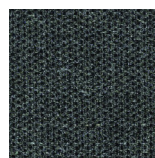
Reduced emissions Greenguard and
Greenguard Gold certified



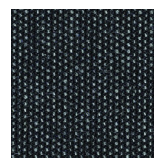
144



148



184



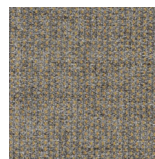
188



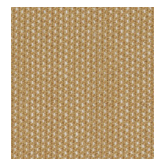
244



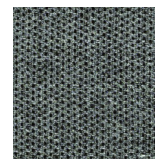
248



273



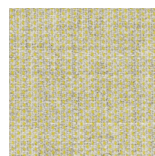
277



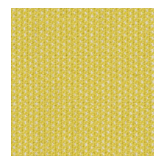
384



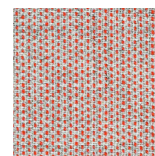
388



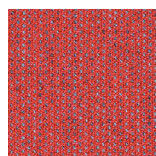
423



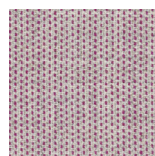
427



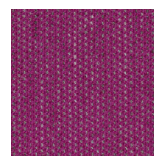
544



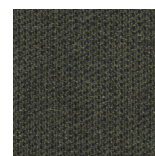
548



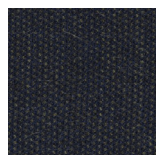
643



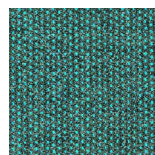
647



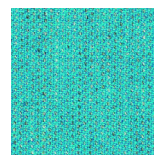
793



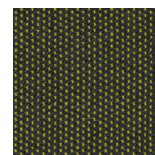
797



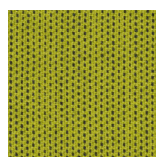
884



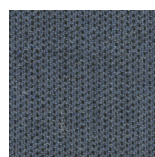
888



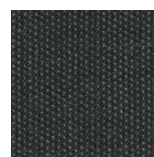
933



937



983



987

Steelcut Trio/Gr.I by Kvadrat

Steelcut T.- Product information

Steelcut Trio is a hardwearing woollen upholstery textile with the same construction as Steelcut. Originally designed by Frans Dijkmeijer, it comes in updated colourways crafted by Giulio Ridolfo. The three-dimensional surface of Steelcut Trio resembles small pyramids or steel points. Despite the complexity of the textile's innovative weave, it has a simple, precise expression. Steelcut Trio is yarn-dyed and made from 3 differently coloured yarns.

Technical information

Steelcut Trio 3 - 0746

Application

Offices, hotels, institutions, domestic use. Great durability.

Composition

90% New wool (worsted), 10% Nylon

Weight

770 g/lin.m

Width

140 cm

Abrasion

100,000 rubs martindale (EN ISO 12947)

Pilling

4 scale 1-5, max. 5 - EN ISO 12945

Light fastness

5-7 scale 1-8, max. 8 - EN ISO 105-B02

Rubbing fastness

3-5/4-5 (wet/dry)

scale 1-5, max. 5 - EN ISO 105x12

Care

Please, see the ISO symbols.

Flammability

AS/NZS 3837, class 2

BS 5852 part 1

EN 1021-1/2

IMO FTP Code 2010 Part 8

NF D 60 013

NFPA 260

SN 198 898 5.3 with treatment

UNI 9175 1IM

US Cal. Bull. 117-2013

ÖNORM B1/ Q1

BS 5852 Crib 5 with treatment

AS/NZS 1530.3

BS 5852 ignition source 3

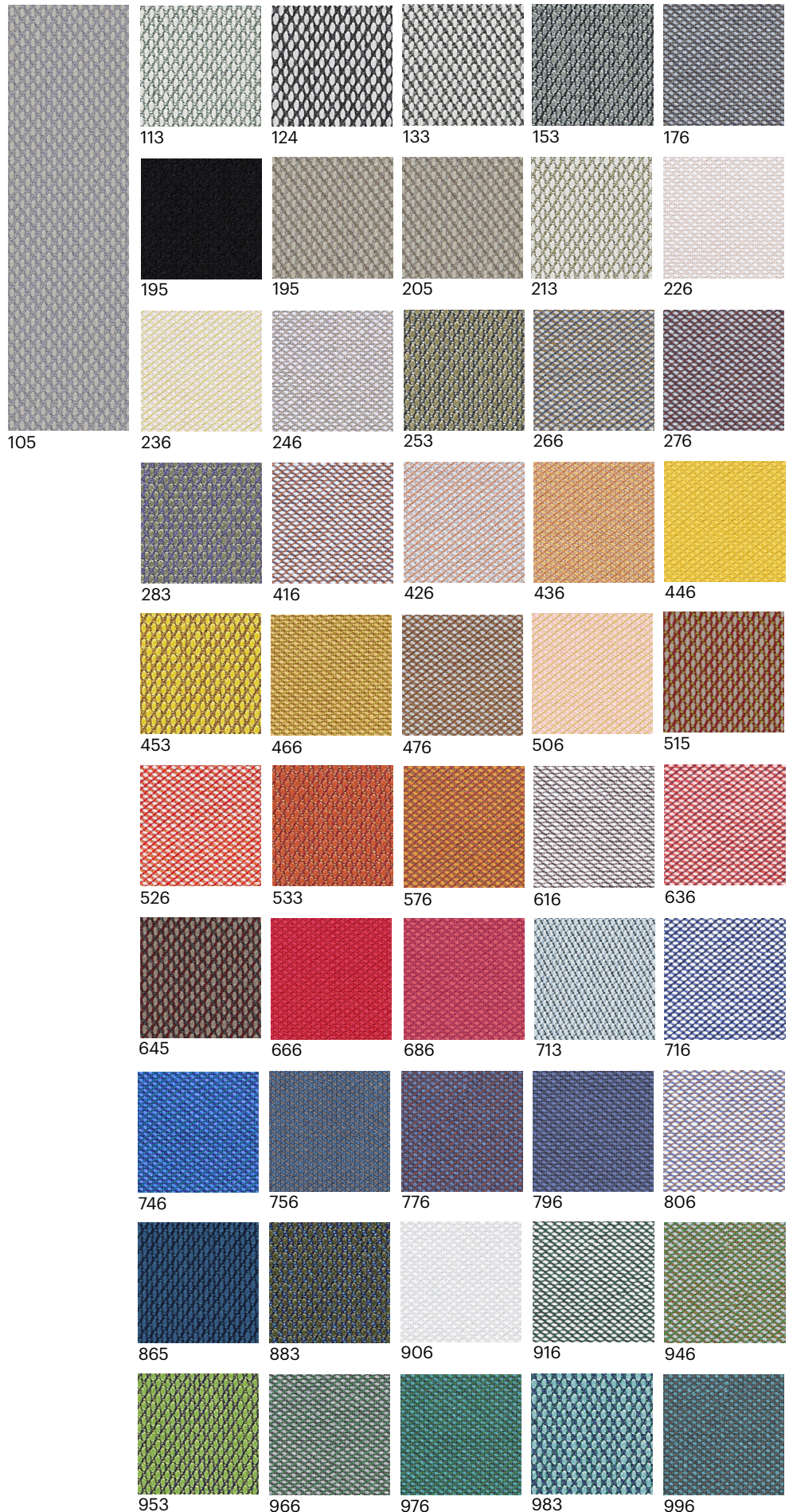
GB 50222 B1 with treatment

Environment

EU Ecolabel Certificate

Environmental Product Declaration,
EN15804

Reduced emissions Greenguard and
Greenguard Gold certified



Hallingdal/Gr.I by Kvadrat

Hallingdal - Product information

Kvadrat's first textile 'Hallingdal' has become the archetype of woollen textiles. The very durable upholstery fabric was originally designed in 1965 by Nanna Ditzel, and is now available in a version with an updated colour scale: Hallingdal 65.

Hallingdal 65 is made of wool and viscose, which complement each other well: the wool provides excellent durability and flexibility, whilst the viscose adds brilliance and depth to the colour. Both materials are dyed before they are spun, which highlights the rich texture of the fabric.

Technical information

Hallingdal 65 - 0733

Application

Offices, hotels, institutions, domestic use. Great durability.

Composition

70% New wool, 30% Viscose

Weight

795 g/lin.m

Width

130 cm

Abrasion

100,000 rubs martindale (EN ISO 12947)

Pilling

3-4 scale 1-5, max. 5 - EN ISO 12945

Light fastness

5-7 scale 1-8, max. 8 - EN ISO 105-B02

Rubbing fastness

3-5/4-5 (wet/dry)

scale 1-5, max. 5 - EN ISO 105x12

Care

Please, see the ISO symbols.

Flammability

AS/NZS 1530.3

BS 5852 Crib 5

BS 5852 part 1

EN 1021-1/2

IMO FTP Code 2010 Part 8

NF D 60 013

NFPA 260

UNI 9175 1IM

US Cal. Bull. 117-2013

ÖNORM B1/ Q1

BS 5852 ignition source 3

GB 50222 B1 with treatment (ch

AS/NZS 3837, class 2

SN 198 898 5.2 with treatment

Environment

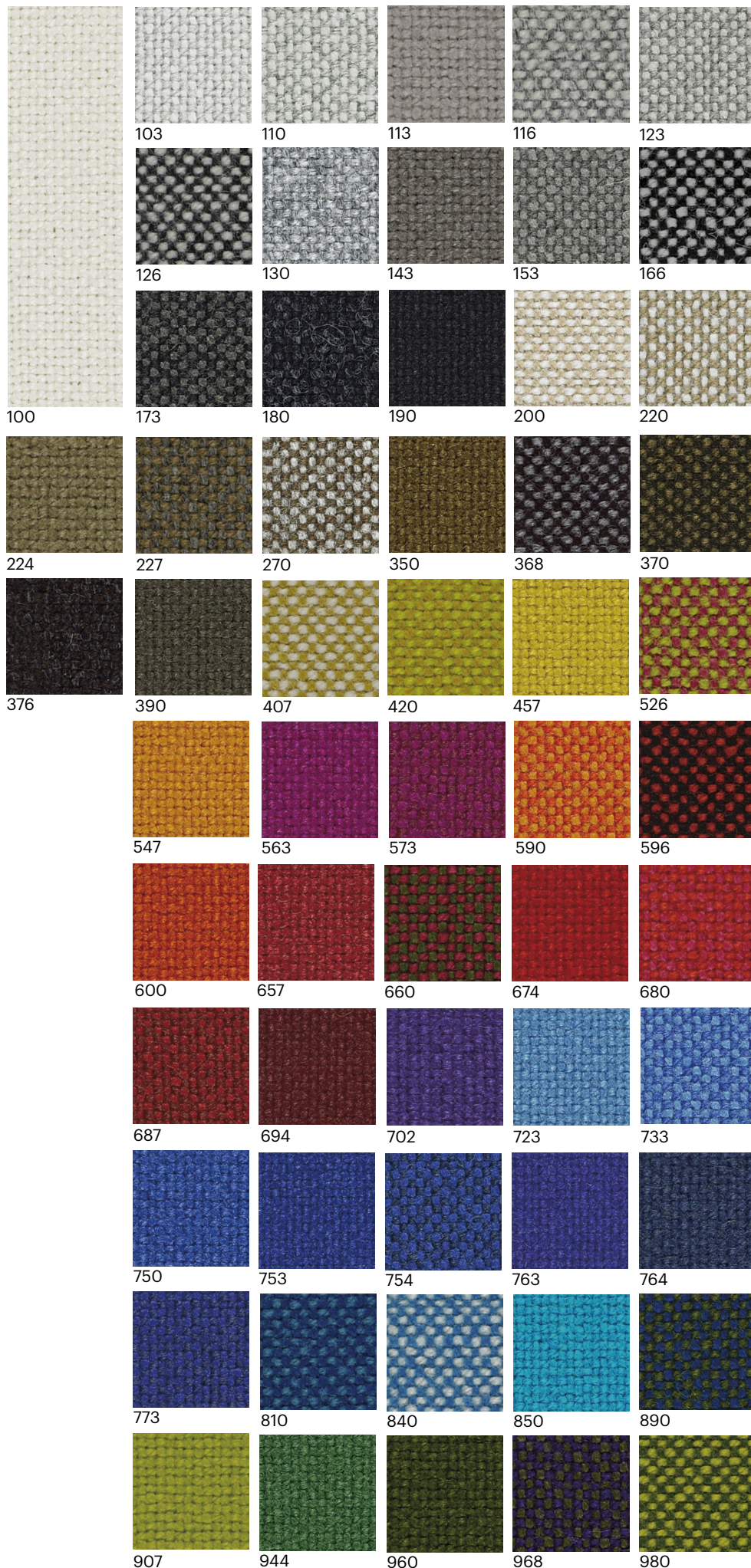
EU Ecolabel Certificate

Environmental Product Declaration,

EN15804

Reduced emissions Greenguard and

Greenguard Gold certified



Canvas/Gr.I by Kvadrat

Canvas - Product information

Canvas is a vibrant woollen upholstery textile created by Giulio Ridolfo. Particularly well-suited to large surfaces thanks to its pronounced structure, it features a soft weave and an expanded palette inspired by the landscapes of Skagen, Denmark.

The melange yarn used to craft Canvas combines three colours, with six hues in every colourway. Consequently, the textile offers exceptional colour richness and an intriguing expression. From a distance, it has the calm surface of a unicoloured textile. But, get closer, and shimmering colour nuances, delicate contrasts and an elegant structure emerge.

Technical information

Canvas 2 - 0356

Application

Offices, hotels, institutions, domestic use. Great durability.

Composition

90% New wool (worsted), 10% Nylon

Weight

480 g/lin.m

Width

140 cm / 55 inches

Abrasion

100,000 rubs martindale (EN ISO 12947)

Pilling

4 scale 1-5, max. 5 - EN ISO 12945

Light fastness

5-7 scale 1-8, max. 8 - EN ISO 105-B02

Rubbing fastness

4/4-5 (wet/dry)

scale 1-5, max. 5 - EN ISO 105x12

Care

Please, see the ISO symbols.

Flammability

AS/NZS 1530.3

BS 5852 part 1

EN 1021-1/2

IMO FTP Code 2010 Part 8

NF D 60 013

NFPA 260

SN 198 898 5.3 with treatment

UNI 9175 1IM

US Cal. Bull. 117-2013

ÖNORM B1/ Q1

BS 5852 ignition source 3

BS 5852 Crib 5 with treatment

GB 50222 B1 with treatment

Environment

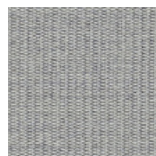
EU Ecolabel Certificate

Environmental Product Declaration,
EN15804

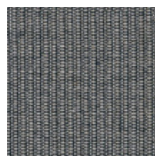
Reduced emissions Greenguard and
Greenguard Gold certified



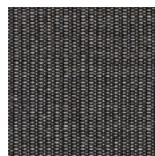
114



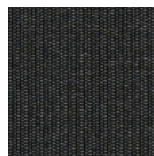
124



134



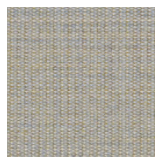
154



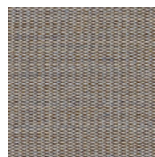
174



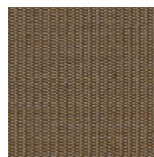
216



224



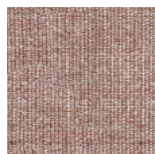
244



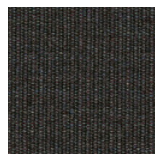
254



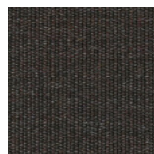
264



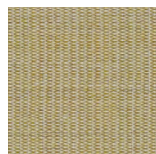
356



364



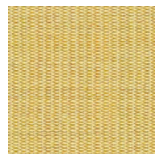
374



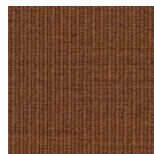
414



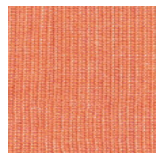
424



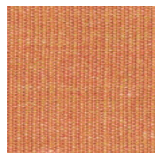
446



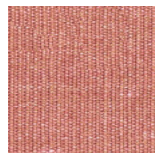
454



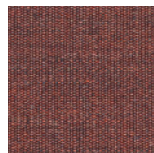
546



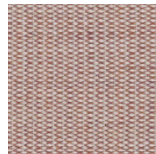
556



566



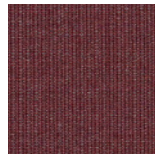
576



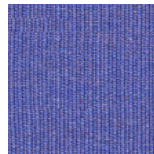
614



644



654



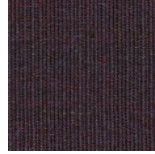
666



674



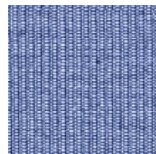
684



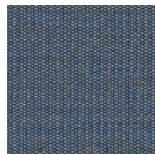
694



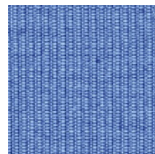
716



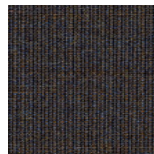
726



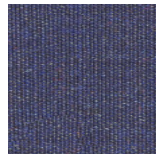
734



746



764



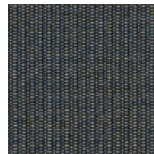
786



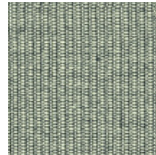
794



836



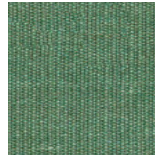
854



926



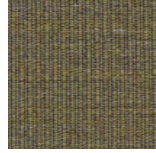
936



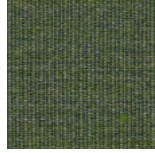
946



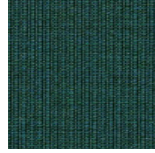
954



964



974



984



996

Re-wool/Gr.I by Kvadrat

Re-wool- Product information

Crafted using 45% recycled wool, Re-wool is a rich upholstery textile with a sustainable profile. The textile is partly made by reusing scraps from Kvadrat's yarn spinners in the UK. It is designed by Margrethe Odgaard.

The idea was to create a both honest and environmentally friendly – textile with a poetic feel by recycling leftover material from Kvadrat's own production', explains Margrethe Odgaard. Reminiscent of colourful stitchings on a darker background, Re-wool features exceptional depth of colour, creating a dynamic play on the textile's surface when applied to furniture.

Technical information

Re-wool - 0218

Application

Offices, hotels, institutions, domestic use. Great durability.

Composition

45% New wool (worsted), 45% Recycled wool, 10% Nylon

Weight

540 g/lin.m

Width

140 cm / 55 inches

Abrasion

100,000 rubs martindale (EN ISO 12947)

Pilling

4 scale 1-5, max. 5 - EN ISO 12945

Light fastness

5-7 scale 1-8, max. 8 - EN ISO 105-B02

Rubbing fastness

4/4-5 (wet/dry)

scale 1-5, max. 5 - EN ISO 105x12

Care

Please, see the ISO symbols.

Flammability

BS 5852 Crib 5 with treatment

BS 5852 ignition source 3

BS 5852 part 1

EN 1021-1/2

IMO FTP Code 2010 Part 8

NF D 60 013

UNI 9175 1IM

US Cal. Bull. 117-2013

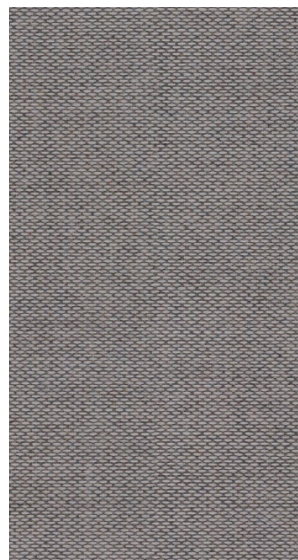
ÖNORM B1/ Q1

AS/NZS 3837, class 2

Environment

EU Ecolabel Certificate

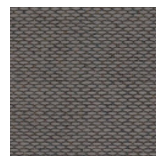
Reduced emissions Greenguard Gold certified



108



128



158



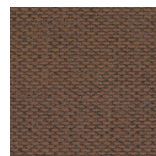
198



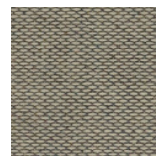
218



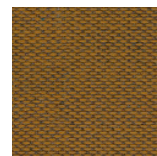
358



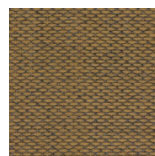
378



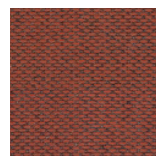
408



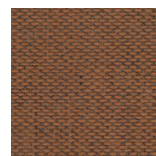
448



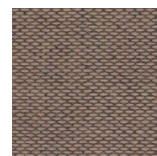
458



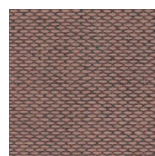
558



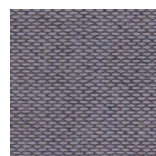
568



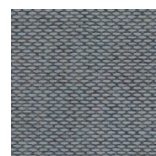
628



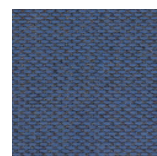
648



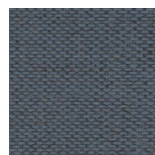
658



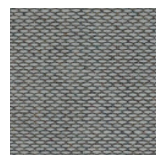
718



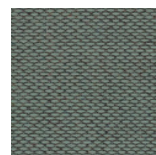
758



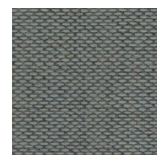
768



828



858



868

Tonus/Gr.I by Kvadrat

Tonus - Product information

Tonus 4 is a colour update of Tonus, an elastic upholstery fabric by late textile artist Nina Koppel. Ideal for modern organic furniture and characterised by rare colour richness, it comes in a total of 47 hues, of which 19 are new. Now recognised as a classic textile, Tonus brings colours to life in vibrant, precise fashion. Building on this characteristic, the intensity and brightness of all the colours have been increased.

Technical information

Tonus 4 - 0914

Application

Offices, hotels, institutions, domestic use. Great durability and stretchability.

Composition

90% New wool, 10% Helanca

Weight

665 g/lin.m

Width

140 cm / 55 inches

Abrasion

100,000 rubs martindale (EN ISO 12947)

Pilling

3 scale 1-5, max. 5 - EN ISO 12945

Light fastness

5-7 scale 1-8, max. 8 - EN ISO 105-B02

Rubbing fastness

3-5/3-5 (wet/dry)

scale 1-5, max. 5 - EN ISO 105x12

Care

Please, see the ISO symbols.

Flammability

BS 5852 part 1

EN 1021-1/2

IMO FTP Code 2010 Part 8

NF D 60 013

NFPA 260

SN 198 898 5.3 with treatment

UNI 9175 1IM

US Cal. Bull. 117-2013

ÖNORM B1/ Q1

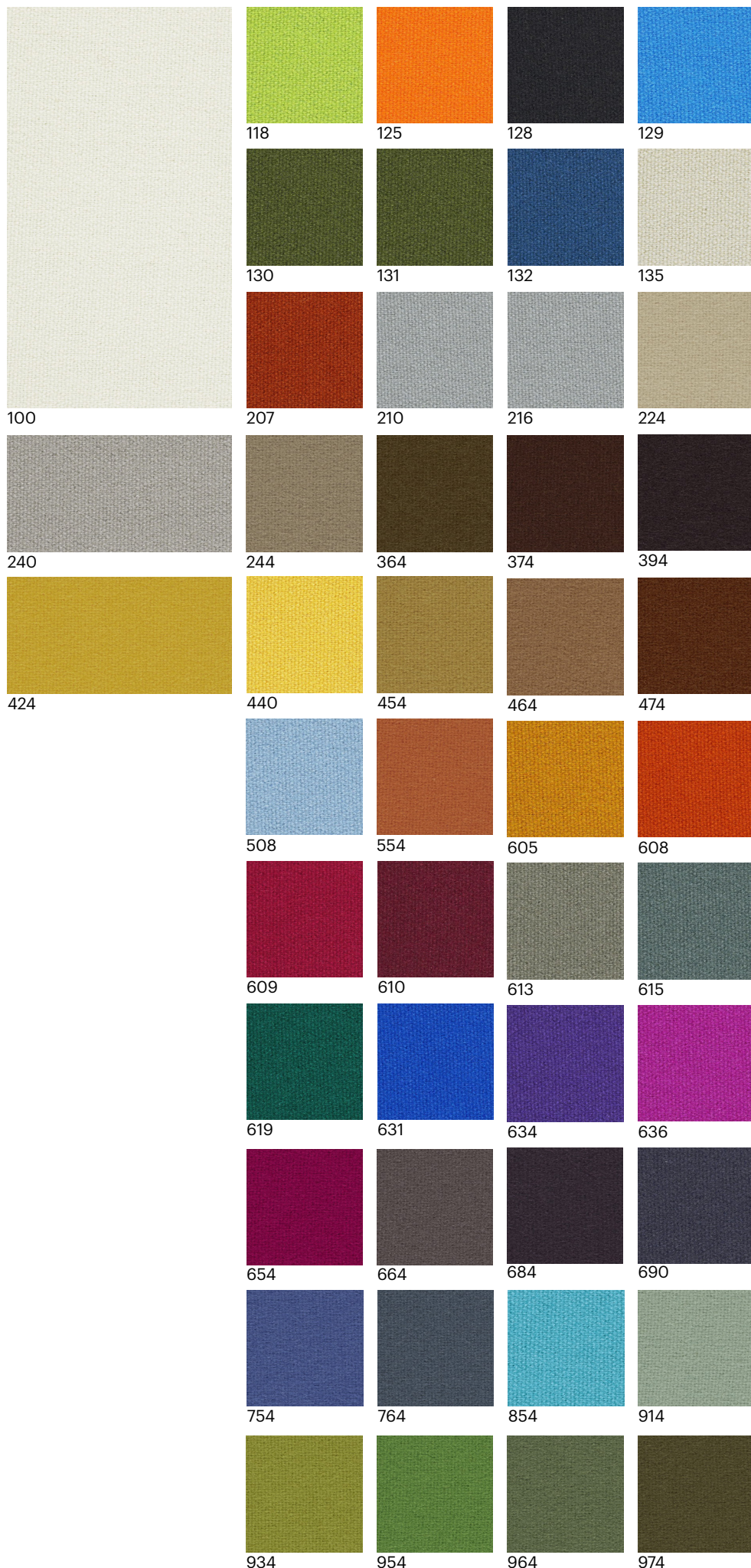
BS 5852 Crib 5 with treatment

Environment

EU Ecolabel Certificate

Environmental Product Declaration,
EN15804

Reduced emissions Greenguard and
Greenguard Gold certified



Divina/Gr.I by Kvadrat

Divina - Product information

Divina is a full-cloth product, which means that it is manufactured by weaving the yarn in a coarse linen hose casing, after which, it is subjected to mechanical processing using very high temperatures, at the same time as it is being coloured. This creates a situation where the surface becomes smooth, directionless and uniform in a manner very similar to the properties of felt.

Technical information

Divina 3 - 0876

Application

Offices, hotels, institutions, domestic use.

Composition

100% New wool

Weight

840 g/lin.m

Width

150 cm / 59 inches

Abrasion

45,000 rubs martindale (EN ISO 12947)

Pilling

3 scale 1-5, max. 5 - EN ISO 12945

Light fastness

5-7 scale 1-8, max. 8 - EN ISO 105-B02

Rubbing fastness

4/4-5 (wet/dry)

scale 1-5, max. 5 - EN ISO 105x12

Care

Please, see the ISO symbols.

Iron withouts steam.

Flammability

AS/NZS 1530.3

BS 5852 Crib 5

BS 5852 part 1

BS 5867 part 2 type B

EN 1021-1/2

EN 13501, C-s1, d0, glued

IMO FTP Code 2010 Part 8

NF D 60 013

NFPA 260

SN 198 898 5.3 with treatment

UNI 9175 1IM

US Cal. Bull. 117-2013

ÖNORM B1/ Q1

BS 5852 ignition source 3

GB 50222 B1 with treatment

Environment

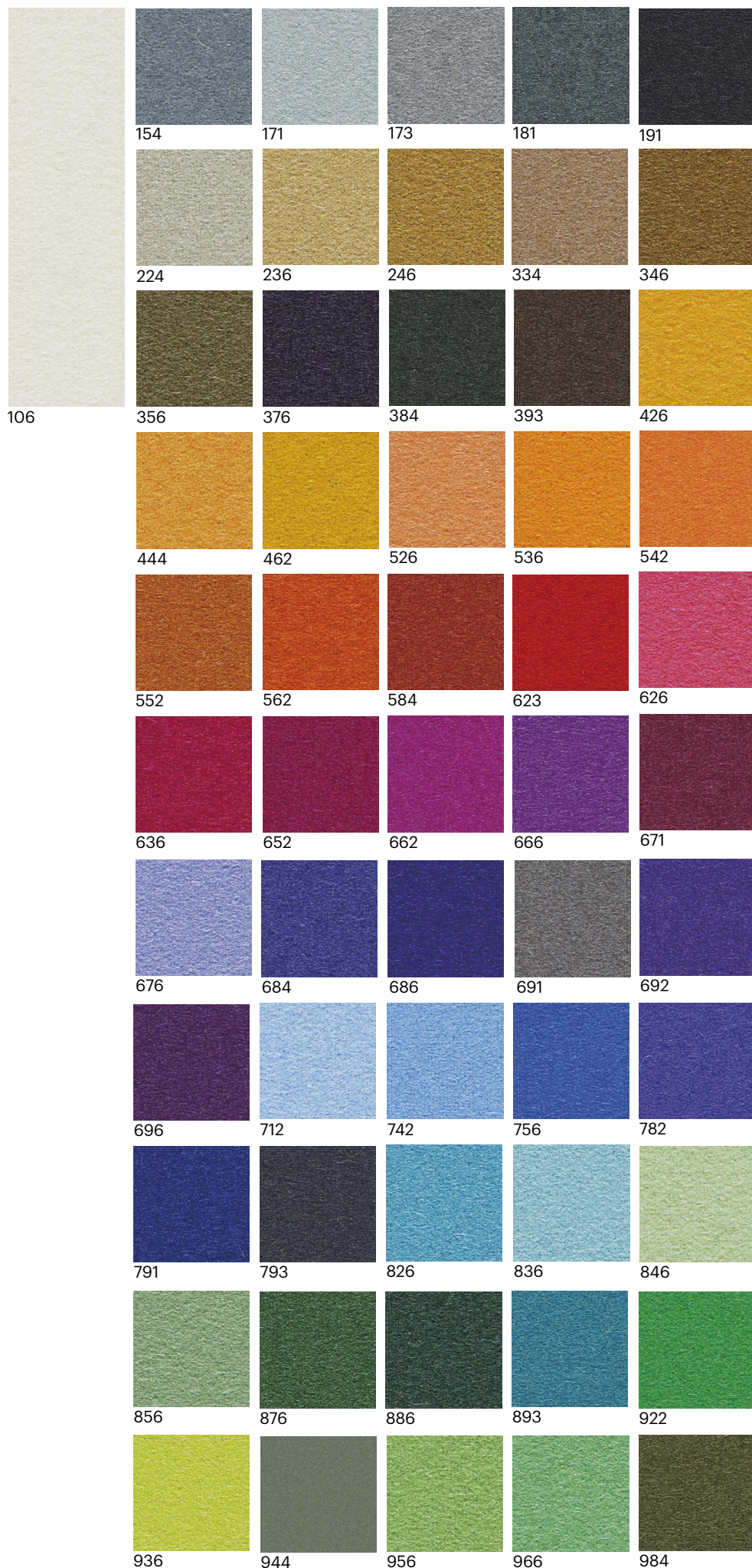
EU Ecolabel Certificate

Environmental Product Declaration,

EN15804

Reduced emissions Greenguard and

Greenguard Gold certified



MD/Gr.I

by Kvadrat

MD - Product information

Divina MD is an upholstery textile designed by Finn Sködt. Available in sophisticated, rich colours, which reveal hidden depths as the perspective of the viewer changes, it makes a strong colour statement. In addition, thanks to its smooth, directionless and consistent surface, it complements the shape of furniture very well and is ideal for organically shaped furniture.

Divina MD's full-bodied and subtle structure is ideal for bringing an extensive range of tones to life. Its colourways, which are all crafted from a blend of different tones, appear unicoloured from a distance, but reveal different colour nuances under closer examination.

Technical information

Divina MD - 0433

Application

Offices, hotels, institutions, domestic use.

Composition

100% New wool

Weight

840 g/lin.m

Width

150 cm / 59 inches

Abrasion

45,000 rubs martindale (EN ISO 12947)

Pilling

3 scale 1-5, max. 5 - EN ISO 12945

Light fastness

5-6 scale 1-8, max. 8 - EN ISO 105-B02

Rubbing fastness

4/4-5 (wet/dry)

scale 1-5, max. 5 - EN ISO 105x12

Care

Please, see the ISO symbols.

Iron withouts steam.

Flammability

AS/NZS 1530.3

BS 5852 Crib 5

BS 5852 part 1

BS 5867 part 2 type B

EN 1021-1/2

EN 13501, C-s1, d0, glued

IMO FTP Code 2010 Part 8

NF D 60 013

NFPA 260

SN 198 898 5.3 with treatment

UNI 9175 1IM

US Cal. Bull. 117-2013

ÖNORM B1/ Q1

BS 5852 ignition source 3

GB 50222 B1 with treatment

Environment

EU Ecolabel Certificate

Environmental Product Declaration,

EN15804

Reduced emissions Greenguard and

Greenguard Gold certified



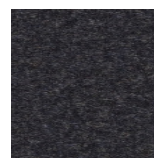
193



203



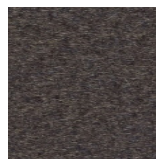
213



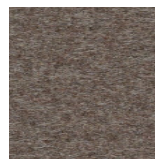
293



343



353



363



413



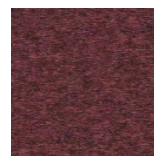
433



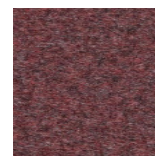
453



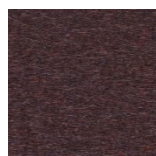
613



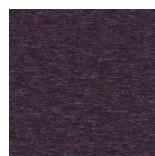
633



653



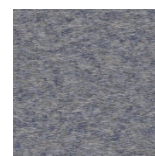
673



683



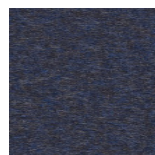
713



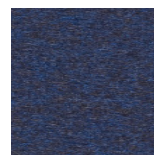
733



743



753



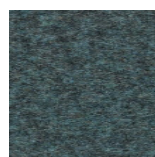
773



783



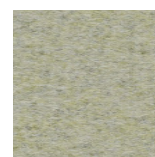
813



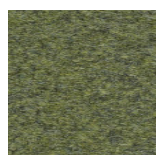
843



873



913



943



973

enea

www.eneadesign.com

Divina Melange/ Gr.I by Kvadrat

D.Melange - Product information

Technical information

Divina Melange 3 - 0597

Application

Offices, hotels, institutions, domestic use.

Composition

100% New wool

Weight

840 g/lin.m

Width

150 cm / 59 inches

Abrasion

45,000 rubs martindale (EN ISO 12947)

Pilling

3 scale 1-5, max. 5 - EN ISO 12945

Light fastness

5-7 scale 1-8, max. 8 - EN ISO 105-B02

Rubbing fastness

4/4-5 (wet/dry)

scale 1-5, max. 5 - EN ISO 105x12

Care

Please, see the ISO symbols.
Iron withouts steam.

Flammability

AS/NZS 1530.3

BS 5852 Crib 5

BS 5852 part 1

BS 5867 part 2 type B

EN 1021-1/2

EN 13501, C-s1, d0, glued

IMO FTP Code 2010 Part 8

NF D 60 013

NFPA 260

SN 198 898 5.3 with treatment

UNI 9175 1IM

US Cal. Bull. 117-2013

ÖNORM B1/ Q1

BS 5852 ignition source 3

GB 50222 B1 with treatment

Environment

EU Ecolabel Certificate

Environmental Product Declaration,

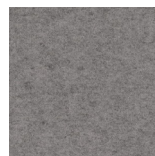
EN15804

Reduced emissions Greenguard and

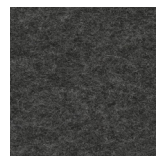
Greenguard Gold certified



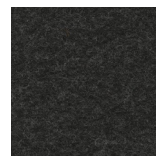
120



147



170



180



227



237



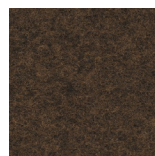
260



277



280



367



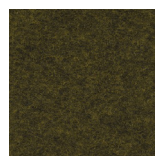
427



457



467



471



517



521



527



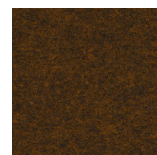
547



557



567



571



581



597



617



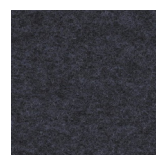
620



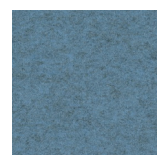
647



677



687



731



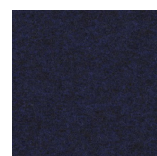
747



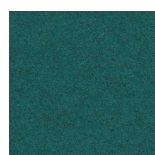
757



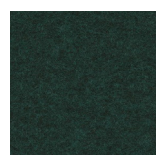
777



787



821



871



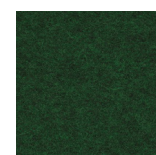
917



937



967



977

Faux & Natural Leathers

www.spradling.eu
www.leder-reinhardt.de
www.elmoleather.com

Valencia/Gr.D by Spradling

Valencia - Part I

Technical information

Design no. 107

Application

Healthcare, hospitality, office, public spaces, residential.

Composition

Vinyl / Urethane Topcoat

Weight

650 gr/m²

Width/length

137 cm / 30 m

Abrasion

>300.000 cycles Martindale
(EN ISO 12947:1999 Part 2)

Backing

Hi-Loft

Protective Finishes

PERMABLOCK

advanced vinyl protection

Flammability

EU: EN 1021 Part 1 & 2

ES: UNE 23.727-90 1R/M.2

FR: NF P 92-503/M2

DE: DIN 4102 B2

IT: UNI 9175 (1987) / UNI 9175/FA1 (1994)

Classe 1.IM (UNO I EMME)

AT: ÖNORM B 3825, Gruppe 1 - Schwerbrennbares Verhalten

AT: ÖNORM A 3800 Teil 1, Qualmbildungsklasse Q1 - schwachqualmend
IMO FTP 2010 Code MSC.307 (88) Part 8 3.1 & 3.2

US: FMVSS 302

US: FAR 25/853

(MED) Marine Equipment Directive (in its current valid version)

ECE R118.03 (R118.02 Annexes 6,7 &8)

EU: EN 71-2:2006+A1:2007 - Safety of Toys - Parte 2: Flammability

US: CAL TB 117-2013, Section E

US: ASTM E 84 Adhered - Class I

US: NFPA 260 - Class I

Finishes and Treatments

Antibacterial Protection

Antifungal Protection

Antimycotic Protection

PERMABLOK3®

Anti-stain Finish

Cold Crack -23°C

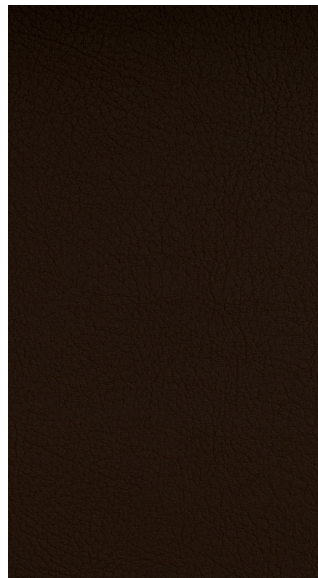
Mildew resistant backing and face

UV-Resistance: ISO 105 B02 ≥ 7/8 (Blue Wool Scale)

EN 71-3 Safety of Toys (Migration of certain elements)

Sulfide Stain Resistant

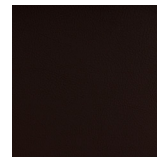
Anti-static Finish



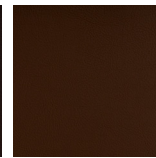
0001



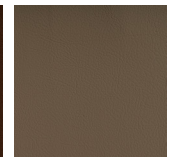
0002



0020



0033



0034



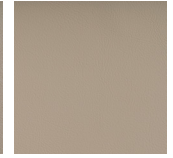
0035



1001



1020



1048



1049



1050



2001



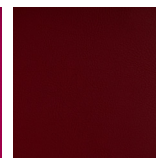
2002



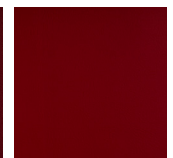
2020



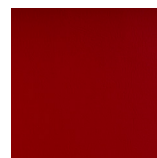
2021



2062



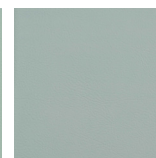
2074



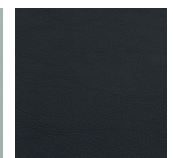
2075



2106



2107



2108



2109



2110



2111



2112



2113



2114



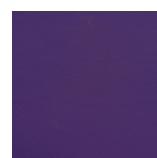
2115



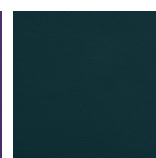
2116



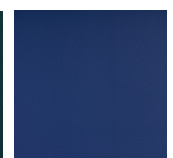
2117



2118



2119



3001

Valencia/Gr.D by Spradling

Valencia - Part II

Technical information

Design no. 107

Application

Healthcare, hospitality, office, public spaces, residential.

Composition

Vinyl / Urethane Topcoat

Weight

650 gr/m²

Width/length

137 cm / 30 m

Abrasion

>300.000 cycles Martindale
(EN ISO 12947:1999 Part 2)

Backing

Hi-Loft

Protective Finishes

PERMABLOCK
advanced vinyl protection

Flammability

EU: EN 1021 Part 1 & 2

ES: UNE 23.727-90 1R/M.2

FR: NF P 92-503/M2

DE: DIN 4102 B2

IT: UNI 9175 (1987) / UNI 9175/FA1 (1994)

Classe 1.IM (UNO I EMME)

AT: ÖNORM B 3825, Gruppe 1 - Schwerbrennbares Verhalten

AT: ÖNORM A 3800 Teil 1, Qualmbildungsklasse Q1 - schwachqualmend

IMO FTP 2010 Code MSC.307 (88) Part

8 3.1 & 3.2

US: FMVSS 302

US: FAR 25/853

(MED) Marine Equipment Directive (in its current valid version)

ECE R118.03 (R118.02 Annexes 6,7 &8)

EU: EN 71-2:2006+A1:2007 - Safety of

Toys - Parte 2: Flammability

US: CAL TB 117-2013, Section E

US: ASTM E 84 Adhered - Class I

US: NFPA 260 - Class I

Finishes and Treatments

Antibacterial Protection

Antifungal Protection

Antimycotic Protection

PERMABLOK3®

Anti-stain Finish

Cold Crack -23°C

Mildew resistant backing and face

UV-Resistance: ISO 105 B02 ≥ 7/8 (Blue

Wool Scale)

EN 71-3 Safety of Toys (Migration of

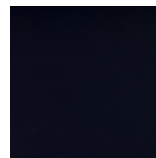
certain elements)

Sulfide Stain Resistant

Anti-static Finish



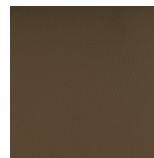
3067



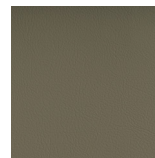
3068



3069



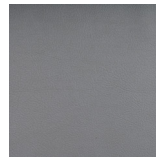
4001



4002



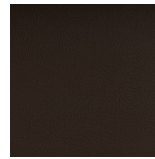
4003



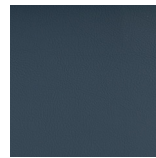
4020



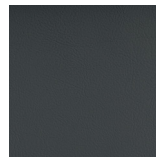
4040



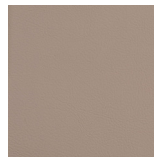
4041



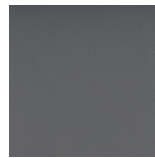
4042



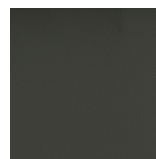
4043



4044



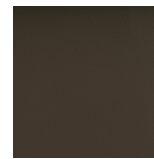
4045



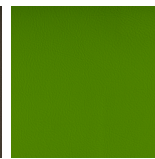
4052



5001



5002



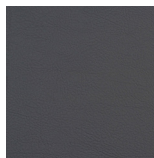
5041



5056



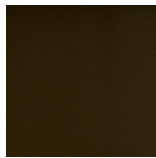
5057



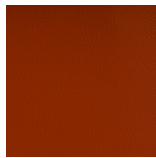
5065



5069



6002



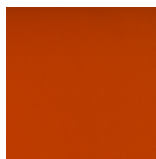
6003



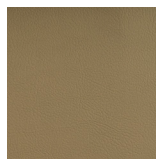
6012



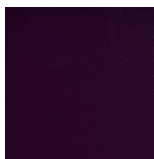
6013



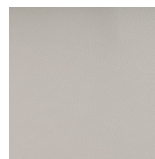
6019



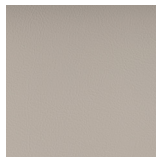
6020



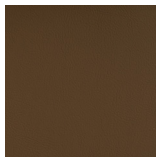
7001



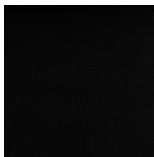
8020



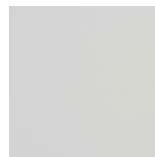
8032



9001



9035



9607

Silvertex/Gr.E by Spradling

Silvertex

Technical information

Design no. 122

Application

Healthcare, hospitality, office, outdoor,
public spaces, residential.

Composition

Vinyl / Urethane Topcoat

Weight

685 gr/m²

Width/length

137 cm / 30 m

Abrasion

>300.000 cycles Martindale
(EN ISO 12947:1999 Part 2)

Backing

Hi-Loft

Protective Finishes

PERMABLOCK
advanced vinyl protection

Flammability

AT: ÖNORM A 3800 Teil 1, Qualmbil-
dungsklasse Q1 - schwachqualmend
AT: ÖNORM B 3825, Gruppe 1 - Schwer-
brennbares Verhalten
DE: DIN 4102 B2
ES: UNE 23.727-90 1R/M.2
ECE Regulation No.118:03 (R118.02 An-
nexes 6, 7 & 8)
EU: EN 1021 Part 1 & 2
EU: EN 71-2:2006+A1:2007 - Safety of
Toys - Parte 2: Flammability
FR: NF P 92-503/M2
IMO FTP 2010 Code MSC.307 (88) Part
8 3.1 & 3.2
IT: UNI 9175 (1987) / UNI 9175/FA1 (1994)
Classe 1.IM (UNO I EMME)
(MED) Marine Equipment Directive (in its
current valid version)
US: CAL TB 117-2013, Section E
US: FAR 25/853
US: FMVSS 302
US: NFPA 260 - Class 1

Finishes and Treatments

Antibacterial Protection
Antifungal Protection
Antimycotic Protection
UV-resistance: 1ISO 105 B02 ≥ 7/8 (Blue
Wool Scale)
PERMABLOK3®
Anti-stain Finish
Cold Crack -29°C
Mildew resistant backing and face
EN 71-3 Safety of Toys (Migration of
certain elements)
Sulfide Stain Resistant
Anti-static Finish



Genua/LG

by

Leder-Reinhardt

Technical information

Genua - Product information

Wear resistant cattle hide leather with light grain design for best cutting results.

Application

Furniture, leathersgoods, contract business

Composition

Wear resistant cattle hide leather

RAWHIDES

South American cattle hides

4,0 - 4,5 m²

THICKNESS 0,9 - 1,1 mm

SURFACE Pigmented

TANNING

Ecologically safe mineral tannage

Shipment ex stock

Minimum hide

Fatting

High-value fat stuffs for a comfortably soft feel

Dyeing

Dyed-through in the drum, with high-class dye stuffs

PCP

According to the PCP-regulation dated 12/12/1989

Environment, AZO colours

The leathers are being produced ecologically safe, according to laws and regulations, without AZO colours

Inflammability

According to DIN EN 1021-1 EUFAC (upholstery furniture union)

Light constancy ≥ 5 (EN ISO 105 - B02)

Rubbing fastness

≥ 4 trocken / dry: 500 EN ISO 11640

$\geq 3 - 4$ nass / wet: 80 EN ISO 11640

$\geq 3 - 4$ alkalisch / alcalic: 50 EN ISO 11640

Crack resistance

30 000 - keine Veränderungen / no damage EN ISO 5402

Care

The leathers can be cleaned with a moistened cloth and neutral soap. For the care we recommend the leather care products LR-Edition. You will find further information in the care instructions. Please ask for your personal copy upon request.



Elmosoft/LE by Elmo

Elmosoft - Part I

Product information

Elmosoft is a chrome free, soft and pliable semi-aniline leather. Outstanding comfort combined with excellent durability and an extensive shade card, makes it very suitable for the public environment. Compare it with the somewhat sturdier, Elmonordic. Visible insect-bites and scars from healed wounds add to the elegant quality of the leather.

Technical information

Raw Material

Scandinavian cattle

Hide size Approx 5,0 m²

Type of Tanning Chrome free

Type of Dyeing Dyed through

Type of Finish Lightly pigmented finish

Thickness 1,1 – 1,3 mm

Lightfastness 6 EN ISO 105-B02

Dry-rubbing 2000 cycles/4 EN ISO 11640

EN ISO 105 – A03

Wet-rubbing 80 cycles/4 EN ISO 11640

EN ISO 105 – A03

Sweat-rubbing 50 cycles/4 EN ISO 11640

EN ISO 105 – A03

Tear strength 20 N SS-EN ISO 3377-1

Finish-adhesion 2 N/cm EN ISO 11644

Flexing endurance 20 000 cycles IUP 20

Inflammability

ASTM E 662 SMP 800-C

BS 5852 Crib 5 - Elmosoft (2021)_Eng

CA TB 117-2013

Chines B1

DIN 4102 - 1 (B1)

DIN 53438 part 3

ECE R118

ECE R118 Annex 7 (May 2020)

EN 1021 - 1,2

IMO 2010 FTP Code Part 8 (IMO652)

ISO 1716

ISO 3795

ISO 8191 - 1,2

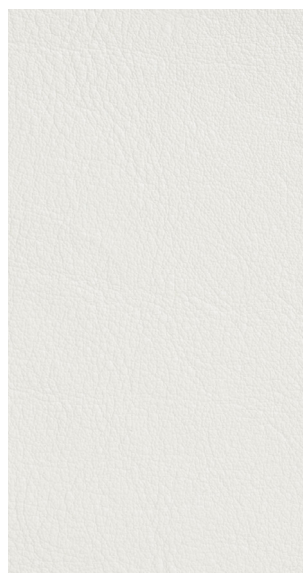
ISO 8191 - 1,2 (Dark brown)

NF P 92-503

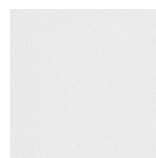
Önorm B 3825

RDWC-CP1-04

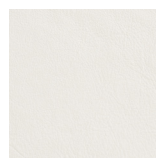
UNI 9175



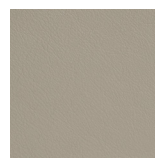
00100



00109



00118



01003



01021



01037



01043



01061



01085



02119



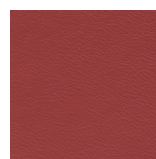
02122



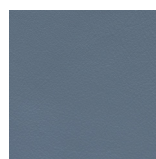
05011



05029



05145



07006



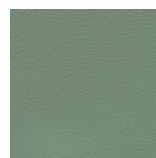
08021



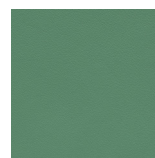
08038



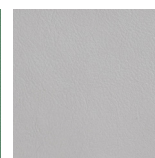
08055



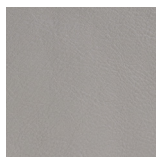
08057



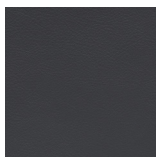
08124



11033



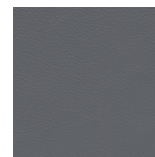
11049



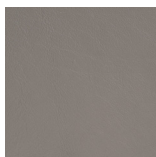
11056



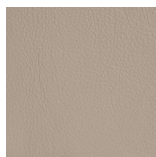
11073



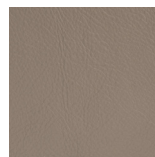
11152



13048



13072



13087



16003



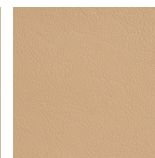
16377



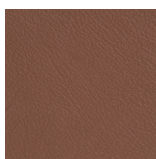
17027



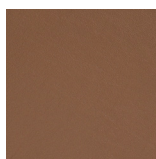
22024



22030



33001



33004

Elmosoft/LE by Elmo

Elmosoft - Part II

Product information

ELMOSOFT is a soft and pliable semi-aniline leather. Outstanding comfort combined with excellent durability and an extensive shade card, makes it very suitable for the public environment. Visible insectbites and scars from healed wounds, add to the elegant character of the leather.

Technical information

Raw Material

Scandinavian cattle

Hide size Approx 5,0 m²

Type of Tanning Chrome free

Type of Dyeing Dyed through

Type of Finish Lightly pigmented finish

Thickness 1,1 – 1,3 mm

Lightfastness 6 EN ISO 105-B02

Dry-rubbing 2000 cycles/4 EN ISO 11640
EN ISO 105 – A03

Wet-rubbing 80 cycles/4 EN ISO 11640
EN ISO 105 – A03

Sweat-rubbing 50 cycles/4 EN ISO 11640
EN ISO 105 – A03

Tear strength 20 N SS-EN ISO 3377-1

Finish-adhesion 2 N/cm EN ISO 11644

Flexing endurance 20 000 cycles IUP 20

Inflammability

EN 1021 – 1&2

8191 – 1&2

CA TB 117-2013

BS 5852 crib 5

DIN 53438

DIN 4102-1 (B1)*

SS-ISO 3795

ÖNORM B 3825

EN ISO 1716

ECE 118RII

IMO 2010 FTP Code Part 8

ASTM E 662 – SMP 800-C

UNI 9175



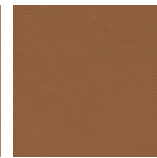
33077



35126



43054



43283



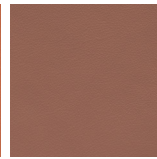
44012



45035



45065



46053



54021



54033



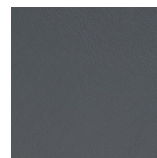
54035



55002



66006



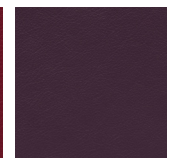
71017



75010



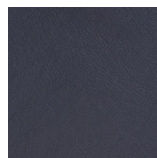
75011



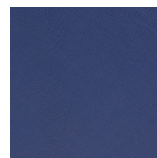
75014



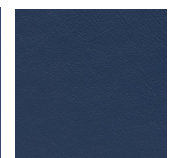
77074



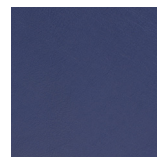
77127



77158



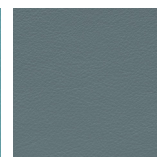
77237



77258



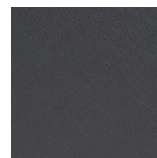
78023



87021



88019



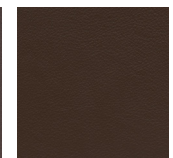
91102



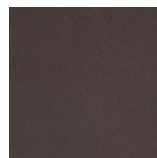
93068



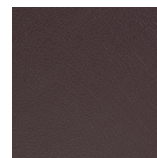
93099



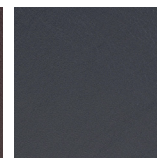
93109



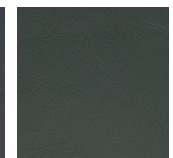
93129



95006



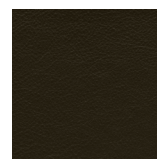
97038



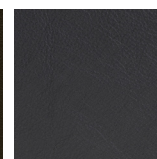
98015



98047



98087



99999

Please be aware that the PDF colour shades can appear different from the real fabric colours. We advise you to request actual fabric samples before ordering.

www.eneadesign.com